

EOS Fitness Anchored Center Pads for Sale

NWC 83rd Ave & Camelback Rd | Glendale, AZ



PROPERTY HIGHLIGHTS

- 65,000 SF to 75,000 SF available

TRAFFIC COUNTS

N	±17,618 VPD (NB/SB)
S	±21,178 VPD (NB/SB)
E	±27,986 VPD (EB/WB)
W	±30,862 VPD (EB/WB)

ADOT 2017



DEMOGRAPHICS

	1 Mile	3 Miles	5 Miles
2018 Population	21,881	173,333	381,731
2023 Population	23,061	185,712	406,440
2018 Median HH Income	\$52,756	\$45,218	\$42,795

ESRI 2018 Estimates

WWW.PHOENIXCOMMERCIALADVISORS.COM | 3131 EAST CAMELBACK ROAD, SUITE 340 | PHOENIX, AZ 85016 | 602.957.9800

Contact

Torrey Briegel

602.734.7219

tbriegel@pcaemail.com

Cameron Warren

602.288.3471

cwarren@pcaemail.com

The information contained herein has been obtained from sources believed reliable. While we do not doubt its accuracy, we have not verified it and make no guarantee, warranty or representation about it. It is your responsibility to independently confirm its accuracy and completeness. Any projections, opinions, assumptions or estimates used are for example only, and do not represent the current or future performance of the property. The value of this transaction to you depends on tax and other factors which should be evaluated by your tax, financial and legal advisors. You and your advisors should conduct a careful, independent investigation of the property to determine to your satisfaction the suitability of the property for your needs.



EOS Fitness Anchored Center Pads for Sale

NWC 83rd Ave & Camelback Rd | Glendale, AZ



WWW.PHOENIXCOMMERCIALADVISORS.COM | 3131 EAST CAMELBACK ROAD, SUITE 340 | PHOENIX, AZ 85016 | 602.957.9800

Contact

Torrey Briegel

602.734.7219

tbriegel@pcaemail.com

Cameron Warren

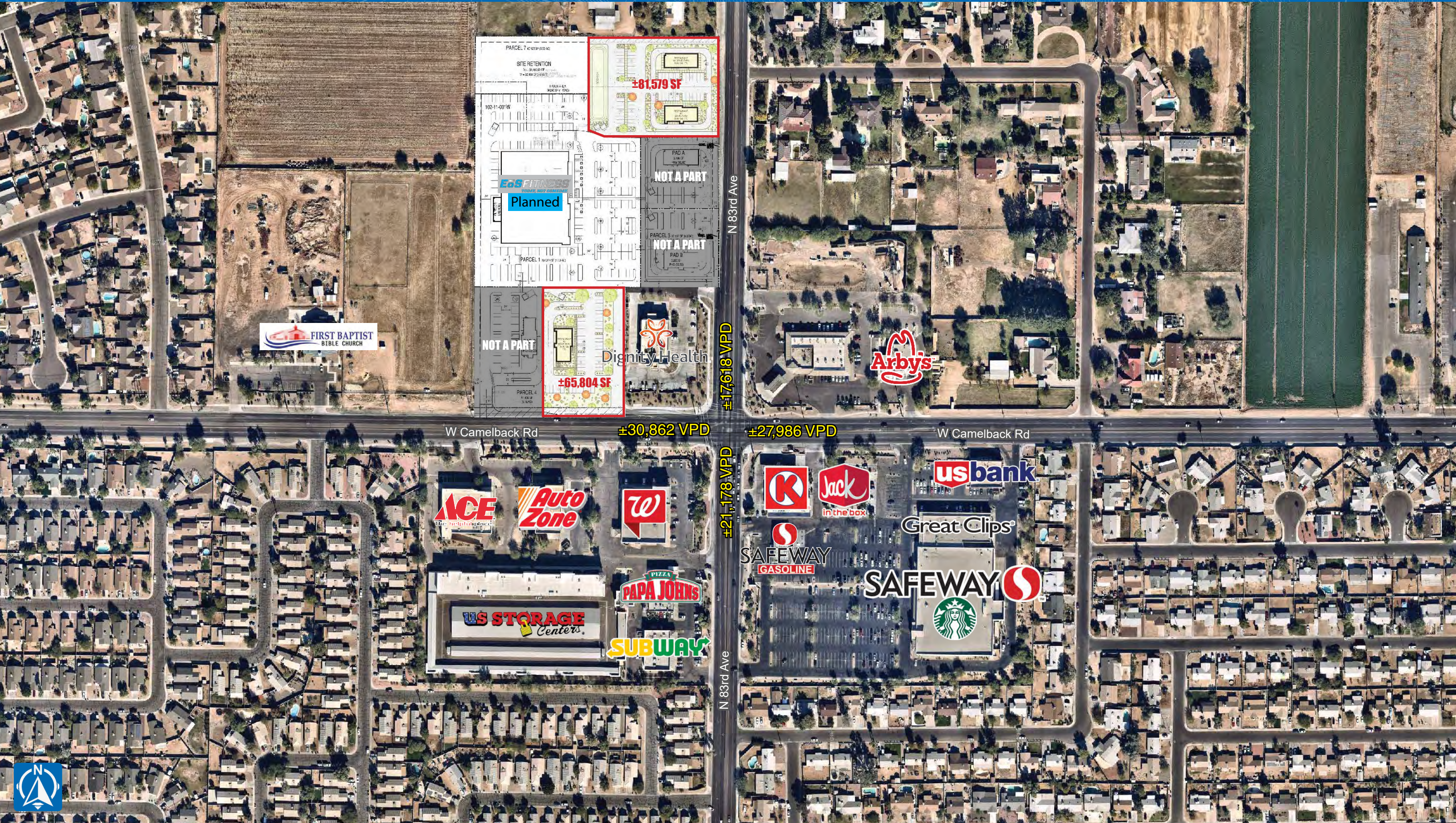
602.288.3471

cwarren@pcaemail.com

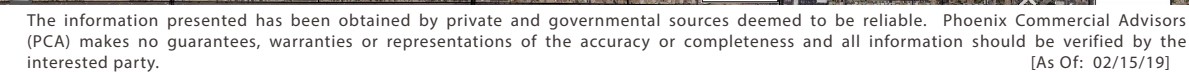
The information contained herein has been obtained from sources believed reliable. While we do not doubt its accuracy, we have not verified it and make no guarantee, warranty or representation about it. It is your responsibility to independently confirm its accuracy and completeness. Any projections, opinions, assumptions or estimates used are for example only, and do not represent the current or future performance of the property. The value of this transaction to you depends on tax and other factors which should be evaluated by your tax, financial and legal advisors. You and your advisors should conduct a careful, independent investigation of the property to determine to your satisfaction the suitability of the property for your needs.



83rd Ave & Camelback Rd
GLENDALE, AZ



The information presented has been obtained by private and governmental sources deemed to be reliable. Phoenix Commercial Advisors (PCA) makes no guarantees, warranties or representations of the accuracy or completeness and all information should be verified by the interested party. [As Of: 08/26/19]





One Page Summary

83rd Ave & Camelback Rd, Phoenix
 -112.237720605 33.508817477
 Rings: 1, 3, 5 mile radii

Prepared By Business Analyst Desktop

Latitude: 33.508817
 Longitude: -112.237721

	1 mile	3 miles	5 miles
Population Summary			
2000 Total Population	20,035	133,106	302,913
2010 Total Population	20,233	154,012	345,365
2018 Total Population	21,881	173,333	381,731
2018 Group Quarters	38	292	1,178
2023 Total Population	23,061	185,712	406,440
2018-2023 Annual Rate	1.06%	1.39%	1.26%
2018 Total Daytime Population	14,420	130,824	333,831
Workers	1,403	30,141	107,897
Residents	13,017	100,683	225,934
Household Summary			
2000 Households	5,694	38,517	93,343
2000 Average Household Size	3.52	3.45	3.23
2010 Households	5,425	42,894	102,951
2010 Average Household Size	3.72	3.58	3.35
2018 Households	5,802	47,912	112,637
2018 Average Household Size	3.76	3.61	3.38
2023 Households	6,085	51,329	119,733
2023 Average Household Size	3.78	3.61	3.38
2018-2023 Annual Rate	0.96%	1.39%	1.23%
2010 Families	4,485	33,896	76,840
2010 Average Family Size	4.01	3.96	3.83
2018 Families	4,772	37,376	83,139
2018 Average Family Size	4.08	4.04	3.91
2023 Families	5,004	39,836	87,986
2023 Average Family Size	4.11	4.06	3.94
2018-2023 Annual Rate	0.95%	1.28%	1.14%
Housing Unit Summary			
2018 Housing Units	6,403	54,799	128,575
Owner Occupied Housing Units	58.0%	46.0%	45.2%
Renter Occupied Housing Units	32.6%	41.4%	42.4%
Vacant Housing Units	9.4%	12.6%	12.4%
Median Household Income			
2018	\$52,756	\$45,218	\$42,795
2023	\$58,017	\$51,611	\$48,990
Median Home Value			
2018	\$135,458	\$142,263	\$138,695
2023	\$174,457	\$177,405	\$173,885
Average Income Value			
Average Household Income	\$63,105	\$56,634	\$54,797
Per Capita Income			
2018	\$16,815	\$15,761	\$16,233
2023	\$19,579	\$18,403	\$18,895
Median Age			
2018	28.5	28.0	28.8
2018 Population 25+ by Educational Attainment			
Total	12,302	96,760	218,278
Less than 9th Grade	13.9%	14.7%	14.7%
9th - 12th Grade, No Diploma	17.9%	15.7%	14.5%
High School Graduate	26.8%	25.8%	25.4%
GED/Alternative Credential	4.2%	4.9%	5.0%
Some College, No Degree	21.7%	20.9%	21.8%
Associate Degree	7.7%	6.8%	6.6%
Bachelor's Degree	5.1%	8.1%	8.4%
Graduate/Professional Degree	2.8%	3.1%	3.7%

Data Note: Household population includes persons not residing in group quarters. Average Household Size is the household population divided by total households. Persons in families include the householder and persons related to the householder by birth, marriage, or adoption. Per Capita Income represents the income received by all persons aged 15 years and over divided by the total population.

Source: U.S. Census Bureau, Census 2010 Data. Esri forecasts for 2018 and 2023

October 12, 2018

Made with Esri Business Analyst