

# 57,809 SF ANCHOR SPACE AVAILABLE

## Monte Vista Village Center

SWC Ellsworth Rd & Baseline Rd | Mesa, AZ



### PROPERTY HIGHLIGHTS

- Close proximity to both US-60 and Loop 202 Freeways
- Close proximity to Eastmark, new housing development with over 12,000 homes at full buildout
- Close proximity to the new Elliot Road Technology Corridor and its strong employment base
- Less than 2 driving miles from Mountain Vista Medical Center and its 820 employees

### AT THE INTERSECTION



CHASE



### DEMOGRAPHICS

	1 Mile	3 Miles	5 Miles
<b>2019 Population</b>	12,173	101,103	227,737
<b>2024 Population</b>	13,023	109,436	247,870
<b>2019 Med HH Income</b>	\$67,123	\$60,756	\$60,239

ESRI 2019 Estimates

### TRAFFIC COUNTS

N: ±20,497 VPD (NB/SB)	E: ±14,972 VPD (EB/WB)
S: ±15,981 VPD (NB/SB)	W: ±15,790 VPD (EB/WB)

ADOT 2018/2019

[WWW.PHOENIXCOMMERCIALADVISORS.COM](http://WWW.PHOENIXCOMMERCIALADVISORS.COM) | 3131 E CAMELBACK RD #340 | PHOENIX, AZ 85016 | 602.957.9800

**Greg Laing**  
602.734.7207  
glaing@pcaemail.com

**Zachary Pace**  
602.734.7212  
zpace@pcaemail.com

The information contained herein has been obtained from sources believed reliable. While we do not doubt its accuracy, we have not verified it and make no guarantee, warranty or representation about it. It is your responsibility to independently confirm its accuracy and completeness. Any projections, opinions, assumptions or estimates used are for example only, and do not represent the current or future performance of the property. The value of this transaction to you depends on tax and other factors which should be evaluated by your tax, financial and legal advisors. You and your advisors should conduct a careful, independent investigation of the property to determine to your satisfaction the suitability of the property for your needs.

[1/29/20]





# 57,809 SF ANCHOR SPACE AVAILABLE

## Monte Vista Village Center

SWC Ellsworth Rd & Baseline Rd | Mesa, AZ



[WWW.PHOENIXCOMMERCIALADVISORS.COM](http://WWW.PHOENIXCOMMERCIALADVISORS.COM) | 3131 E CAMELBACK RD #340 | PHOENIX, AZ 85016 | 602.957.9800

**Greg Laing**  
602.734.7207  
[glaing@pcaemail.com](mailto:glaing@pcaemail.com)

**Zachary Pace**  
602.734.7212  
[zpace@pcaemail.com](mailto:zpace@pcaemail.com)

The information contained herein has been obtained from sources believed reliable. While we do not doubt its accuracy, we have not verified it and make no guarantee, warranty or representation about it. It is your responsibility to independently confirm its accuracy and completeness. Any projections, opinions, assumptions or estimates used are for example only, and do not represent the current or future performance of the property. The value of this transaction to you depends on tax and other factors which should be evaluated by your tax, financial and legal advisors. You and your advisors should conduct a careful, independent investigation of the property to determine to your satisfaction the suitability of the property for your needs.

[1/29/20]

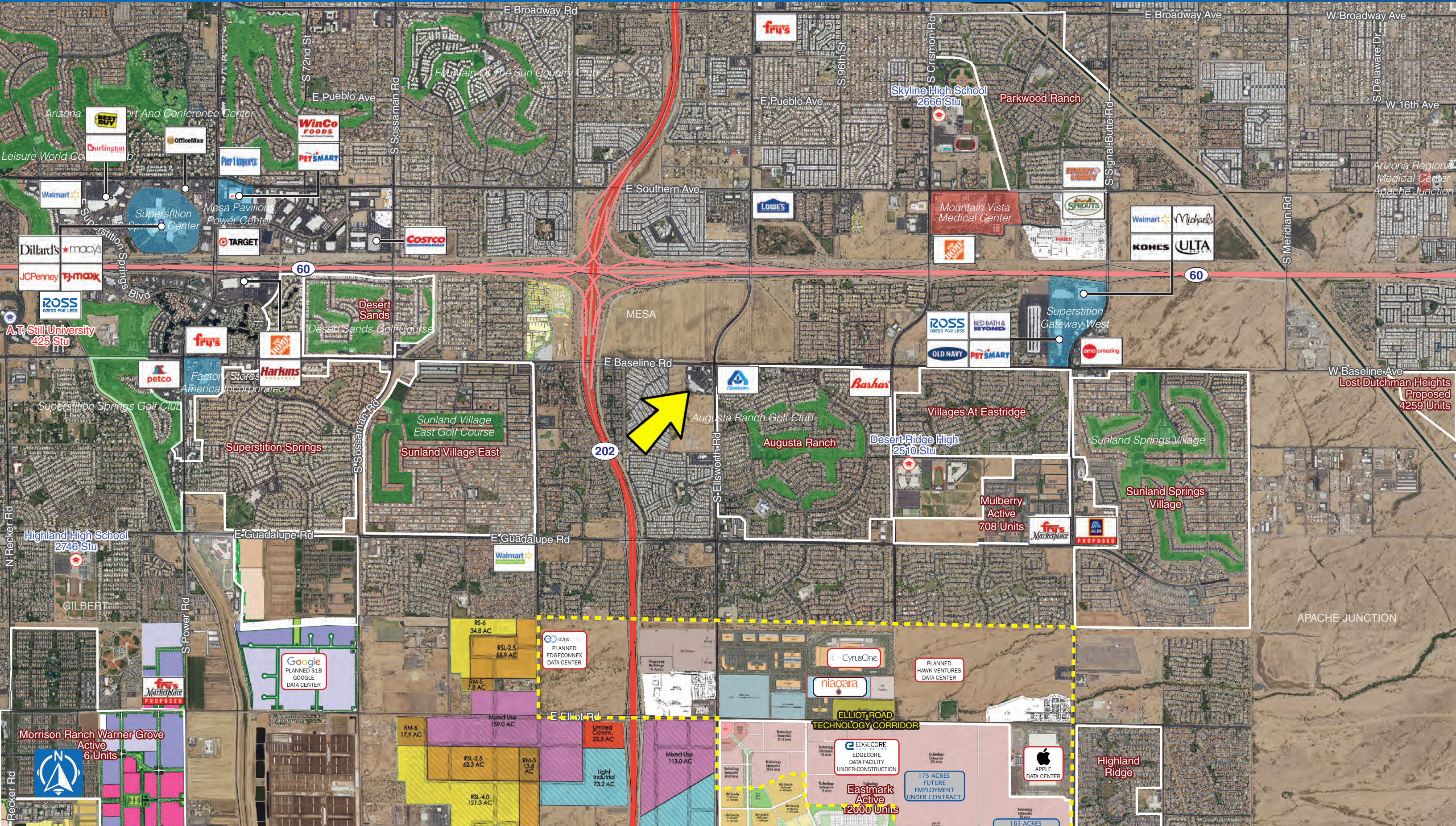








SWC Ellsworth Rd & Baseline Rd | Mesa, AZ







## One Page Summary

Ellsworth Rd & Baseline Rd, Mesa  
-111.636225332 33.3791088420001  
Rings: 1, 3, 5 mile radii

Prepared By Business Analyst Desktop  
Latitude: 33.379109  
Longitude: -111.636225

	1 mile	3 miles	5 miles
<b>Population Summary</b>			
2000 Total Population	4,214	55,173	123,570
2010 Total Population	10,860	84,214	184,324
2019 Total Population	12,173	101,103	227,737
2019 Group Quarters	16	317	1,115
2024 Total Population	13,023	109,436	247,870
2019-2024 Annual Rate	1.36%	1.60%	1.71%
2019 Total Daytime Population	8,819	77,524	189,558
Workers	2,077	20,897	59,222
Residents	6,742	56,627	130,336
<b>Household Summary</b>			
2000 Households	1,742	22,064	49,165
2000 Average Household Size	2.42	2.50	2.49
2010 Households	4,279	33,007	72,066
2010 Average Household Size	2.53	2.54	2.54
2019 Households	4,714	38,751	86,860
2019 Average Household Size	2.58	2.60	2.61
2024 Households	5,021	41,676	93,892
2024 Average Household Size	2.59	2.62	2.63
2019-2024 Annual Rate	1.27%	1.47%	1.57%
2010 Families	3,047	22,569	48,712
2010 Average Family Size	2.99	3.05	3.08
2019 Families	3,295	26,248	58,510
2019 Average Family Size	3.06	3.13	3.16
2024 Families	3,494	28,162	63,211
2023 Average Family Size	3.08	3.15	3.18
2019-2024 Annual Rate	1.18%	1.42%	1.56%
<b>Housing Unit Summary</b>			
2019 Housing Units	6,906	48,184	105,632
Owner Occupied Housing Units	52.5%	62.5%	62.8%
Renter Occupied Housing Units	15.8%	17.9%	19.5%
Vacant Housing Units	31.7%	19.6%	17.8%
<b>Median Household Income</b>			
2019	\$67,123	\$60,756	\$60,239
2024	\$77,895	\$70,223	\$69,981
<b>Median Home Value</b>			
2019	\$210,182	\$213,902	\$228,060
2024	\$233,253	\$245,535	\$262,801
<b>Average Income Value</b>			
Average Household Income	\$83,118	\$77,218	\$79,318
<b>Per Capita Income</b>			
2019	\$32,282	\$29,486	\$30,336
2024	\$37,456	\$34,312	\$35,267
<b>Median Age</b>			
2019	42.6	41.2	40.6
<b>2019 Population 25+ by Educational Attainment</b>			
Total	8,634	70,769	158,886
Less than 9th Grade	1.4%	3.1%	3.1%
9th - 12th Grade, No Diploma	4.3%	6.4%	5.8%
High School Graduate	20.4%	23.6%	23.4%
GED/Alternative Credential	3.6%	4.5%	4.5%
Some College, No Degree	29.6%	26.4%	26.8%
Associate Degree	10.4%	9.4%	9.4%
Bachelor's Degree	19.9%	17.6%	18.0%
Graduate/Professional Degree	10.4%	9.0%	9.1%

**Data Note:** Household population includes persons not residing in group quarters. Average Household Size is the household population divided by total households. Persons in families include the householder and persons related to the householder by birth, marriage, or adoption. Per Capita Income represents the income received by all persons aged 15 years and over divided by the total population.

**Source:** U.S. Census Bureau, Census 2010 Data. Esri forecasts for 2019 and 2024

August 27, 2019