

# Shop Space Available | Parkway Village

S/SWC Estrella Pkwy & Roosevelt St | Goodyear, AZ



For more information, please contact:

Lance Umble  
602.734.7206  
lumble@pcaemail.com

Cameron Warren  
602.288.3471  
cwarren@pcaemail.com

Nick DeDona  
602.734.7208  
ndedona@pcaemail.com



PHOENIX COMMERCIAL ADVISORS

CHAINLINKS  
RETAIL ADVISORS

PHOENIXCOMMERCIALADVISORS.COM

3131 East Camelback Road, #340 | Phoenix, AZ 85016 | 602.957.9800

# Shop Space Available | Parkway Village

S/SWC Estrella Pkwy & Roosevelt St | Goodyear, AZ



## OFFERING SUMMARY

Property Type:	Retail/Power Center
Gross Leasable Area:	±12,500 SF
Available:	±4,440 SF
Zoning:	C-2, City of Goodyear

## PROPERTY OVERVIEW

Outstanding end cap with rare Estrella frontage just south of the I-10 Freeway and an extremely successful Walmart.

## DEMOGRAPHICS

	1 Mile	3 Miles	5 Miles
2018 Population	5,905	70,804	144,385
2023 Population	6,637	78,584	159,145
2018 Median HH Inc	\$67,101	\$75,975	\$70,977

*ESRI 2018 Estimates*

## TRAFFIC COUNTS

N: ±18,590 VPD (NB & SB)

S: ±32,070 VPD (NB & SB)

E: ±148,410 VPD (EB & WB)

W: ±142,000 VPD (EB & WB)

*Goodyear 2015, ADOT 2018*

The information contained herein has been obtained from sources believed reliable. While we do not doubt its accuracy, we have not verified it and make no guarantee, warranty or representation about it. It is your responsibility to independently confirm its accuracy and completeness. Any projections, opinions, assumptions or estimates used are for example only, and do not represent the current or future performance of the property. The value of this transaction to you depends on tax and other factors which should be evaluated by your tax, financial and legal advisors. You and your advisors should conduct a careful, independent investigation of the property to determine to your satisfaction the suitability of the property for your needs.

For more information, please contact:

**Lance Umble**

602.734.7206

lumble@pcaemail.com

**Cameron Warren**

602.288.3471

cwarren@pcaemail.com

**Nick DeDona**

602.734.7208

ndedona@pcaemail.com



3131 East Camelback Road, #340 | Phoenix, AZ 85016 | 602.957.9800

**CHAINLINKS**  
RETAIL ADVISORS

[PHOENIXCOMMERCIALADVISORS.COM](http://PHOENIXCOMMERCIALADVISORS.COM)

# Shop Space Available | Parkway Village

S/SWC Estrella Pkwy & Roosevelt St | Goodyear, AZ



For more information, please contact:

**Lance Umble**

602.734.7206

lumble@pcaemail.com

**Cameron Warren**

602.288.3471

cwarren@pcaemail.com

**Nick DeDona**

602.734.7208

ndedona@pcaemail.com



PHOENIX COMMERCIAL ADVISORS

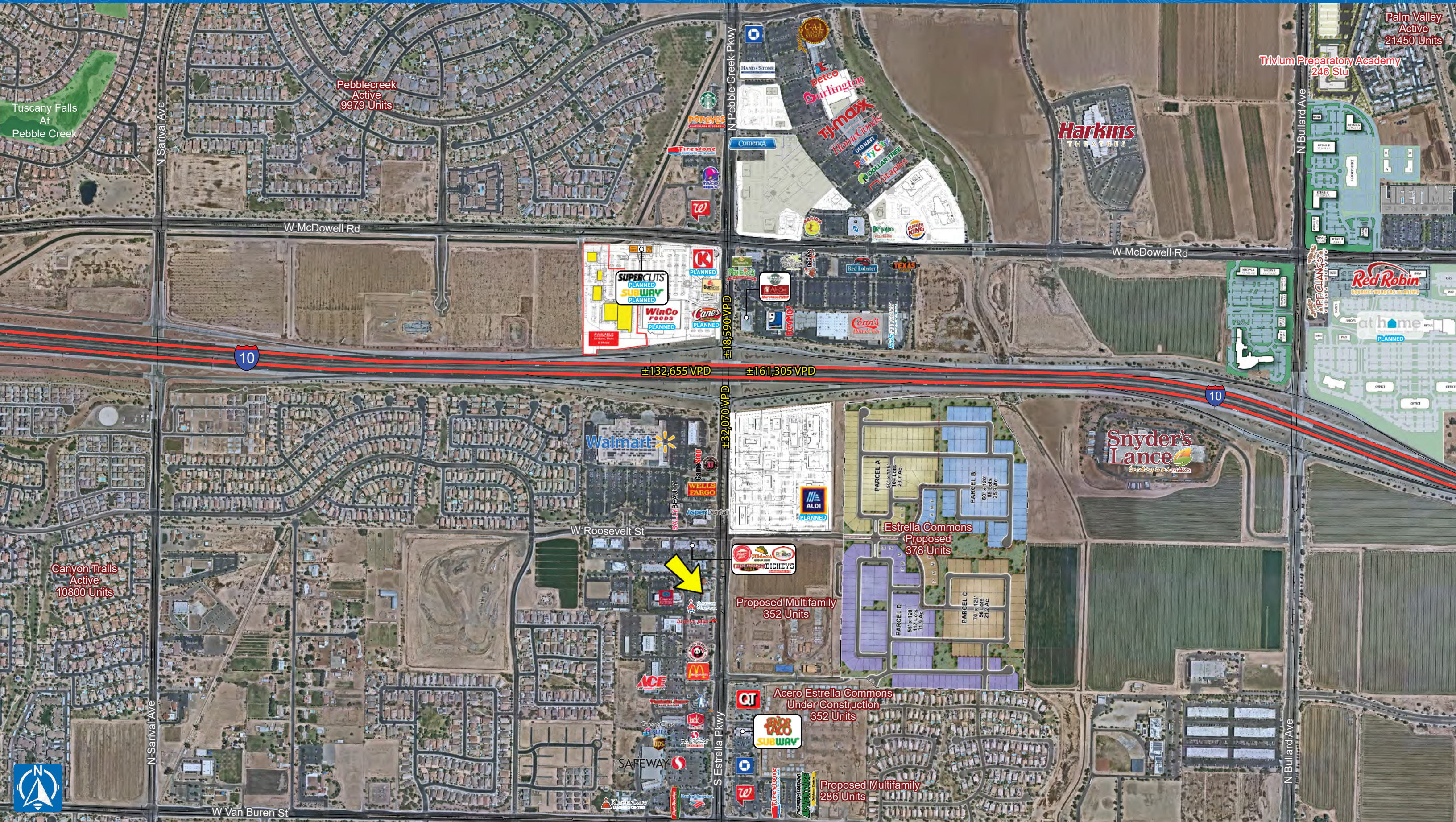
3131 East Camelback Road, #340 | Phoenix, AZ 85016 | 602.957.9800

**CHAINLINKS**  
RETAIL ADVISORS

[PHOENIXCOMMERCIALADVISORS.COM](http://PHOENIXCOMMERCIALADVISORS.COM)

# Estrella Pkwy & Roosevelt St

## GOODYEAR, AZ







# One Page Summary

Estrella Pkwy & Roosevelt St, Goodyear  
 -112.392516731 33.4573187890001  
 Rings: 1, 3, 5 mile radii

Prepared By Business Analyst Desktop  
 Latitude: 33.457319  
 Longitude: -112.392517

	1 mile	3 miles	5 miles
<b>Population Summary</b>			
2000 Total Population	893	19,102	44,726
2010 Total Population	4,470	57,046	117,325
2018 Total Population	5,905	70,804	144,385
2018 Group Quarters	1	3,148	4,839
2023 Total Population	6,637	78,584	159,145
2018-2023 Annual Rate	2.36%	2.11%	1.97%
2018 Total Daytime Population	7,384	60,890	114,350
Workers	4,126	23,353	39,061
Residents	3,258	37,537	75,289
<b>Household Summary</b>			
2000 Households	283	6,640	14,038
2000 Average Household Size	3.16	2.81	3.00
2010 Households	1,377	18,982	37,718
2010 Average Household Size	3.25	2.87	3.00
2018 Households	1,853	23,669	46,150
2018 Average Household Size	3.19	2.86	3.02
2023 Households	2,081	26,385	50,950
2023 Average Household Size	3.19	2.86	3.03
2018-2023 Annual Rate	2.35%	2.20%	2.00%
2010 Families	1,044	14,670	29,171
2010 Average Family Size	3.69	3.23	3.37
2018 Families	1,388	18,186	35,537
2018 Average Family Size	3.66	3.25	3.42
2023 Families	1,552	20,241	39,186
2023 Average Family Size	3.68	3.26	3.44
2018-2023 Annual Rate	2.26%	2.16%	1.97%
<b>Housing Unit Summary</b>			
2018 Housing Units	2,052	26,661	51,584
Owner Occupied Housing Units	61.1%	65.1%	62.0%
Renter Occupied Housing Units	29.2%	23.7%	27.5%
Vacant Housing Units	9.7%	11.2%	10.5%
<b>Median Household Income</b>			
2018	\$67,101	\$75,975	\$70,977
2023	\$76,279	\$83,635	\$79,610
<b>Median Home Value</b>			
2018	\$195,313	\$260,452	\$239,486
2023	\$244,675	\$307,817	\$284,660
<b>Average Income Value</b>			
Average Household Income	\$76,326	\$89,663	\$86,135
<b>Per Capita Income</b>			
2018	\$26,188	\$30,378	\$27,651
2023	\$30,455	\$35,718	\$32,478
<b>Median Age</b>			
2018	33.3	36.0	33.5
<b>2018 Population 25+ by Educational Attainment</b>			
Total	3,797	46,729	91,569
Less than 9th Grade	2.8%	3.7%	4.5%
9th - 12th Grade, No Diploma	6.1%	5.3%	6.6%
High School Graduate	22.4%	20.1%	19.8%
GED/Alternative Credential	3.2%	3.2%	3.4%
Some College, No Degree	36.2%	30.3%	29.5%
Associate Degree	9.0%	9.6%	9.3%
Bachelor's Degree	12.7%	16.7%	16.6%
Graduate/Professional Degree	7.6%	11.0%	10.4%

**Data Note:** Household population includes persons not residing in group quarters. Average Household Size is the household population divided by total households. Persons in families include the householder and persons related to the householder by birth, marriage, or adoption. Per Capita Income represents the income received by all persons aged 15 years and over divided by the total population.

**Source:** U.S. Census Bureau, Census 2010 Data. Esri forecasts for 2018 and 2023