

# Walmart Outparcel Available

SWC Lindsay Rd & McKellips Rd | Mesa, AZ



## PROPERTY HIGHLIGHTS

- 50,523 SF available
- 3,600 SF maximum buildable
- Anchored by Walmart Neighborhood Market
- Zoned C-2, City of Mesa

## DEMOGRAPHICS

	1 Mile	3 Miles	5 Miles
2018 Total Population	14,344	90,665	259,023
2023 Total Population	15,059	97,022	275,856
2018 Median HH Income	\$87,550	\$57,245	\$50,779

ESRI 2018 Estimates

## TRAFFIC COUNTS

N: ±7,200 VPD (NB & SB)	E: ±23,676 VPD (EB & WB)
S: ±15,046 VPD (NB & SB)	W: ±27,900 VPD (EB & WB)

ADOT 2017, Mesa 2017



JOIN



Pizza Hut

BANK OF AMERICA

Firestone

WWW.PHOENIXCOMMERCIALADVISORS.COM | 3131 EAST CAMELBACK ROAD, SUITE 340 | PHOENIX, AZ 85016 | 602.957.9800

## Contact

Nick DeDonna

602.734.7208

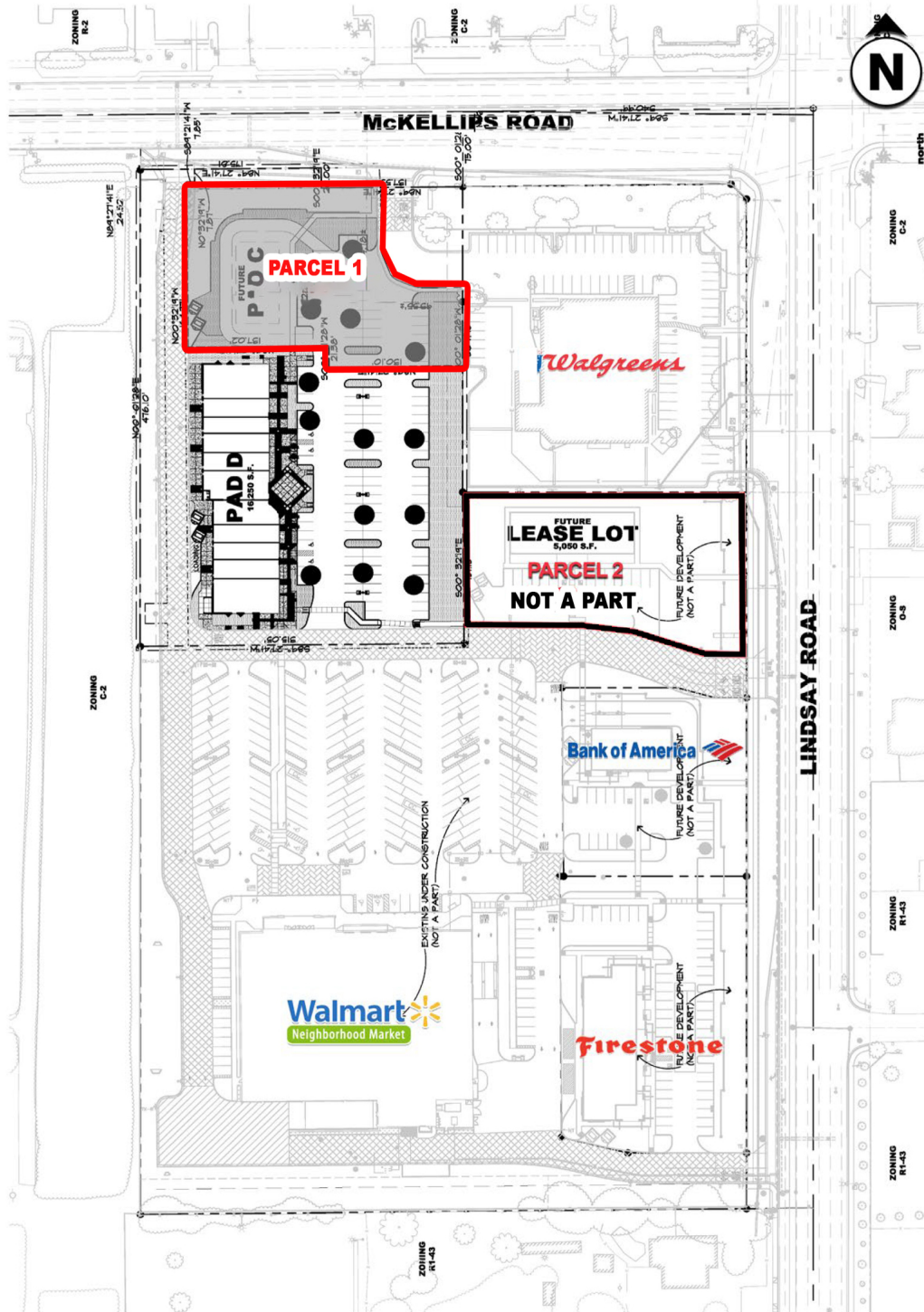
ndedonna@pcaemail.com

The information contained herein has been obtained from sources believed reliable. While we do not doubt its accuracy, we have not verified it and make no guarantee, warranty or representation about it. It is your responsibility to independently confirm its accuracy and completeness. Any projections, opinions, assumptions or estimates used are for example only, and do not represent the current or future performance of the property. The value of this transaction to you depends on tax and other factors which should be evaluated by your tax, financial and legal advisors. You and your advisors should conduct a careful, independent investigation of the property to determine to your satisfaction the suitability of the property for your needs.



# Walmart Outparcel Available

SWC Lindsay Rd & McKellips Rd | Mesa, AZ



WWW.PHOENIXCOMMERCIALADVISORS.COM | 3131 EAST CAMELBACK ROAD, SUITE 340 | PHOENIX, AZ 85016 | 602.957.9800

## Contact

Nick DeDonna

602.734.7208

ndedonna@pcaemail.com

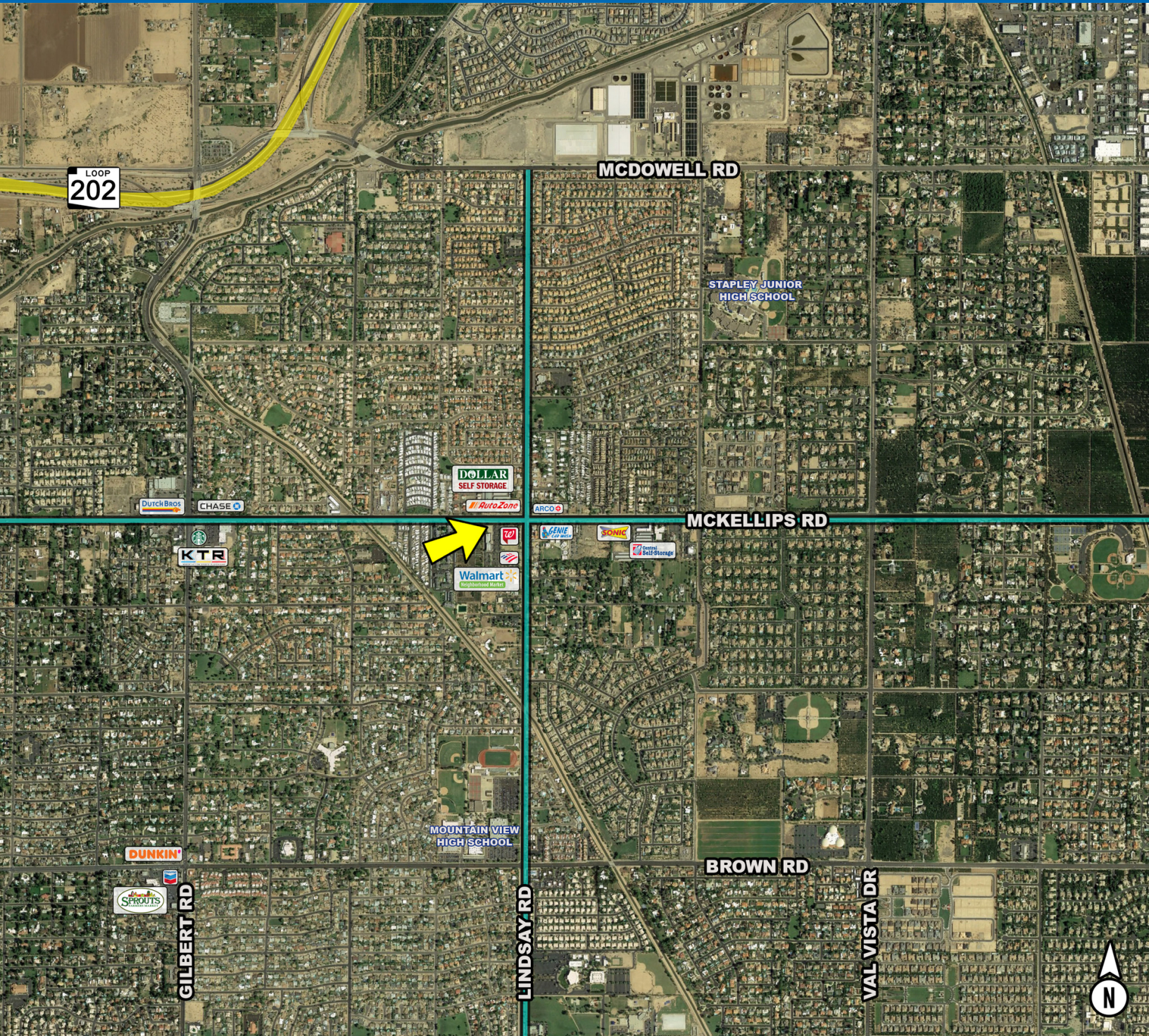
The information contained herein has been obtained from sources believed reliable. While we do not doubt its accuracy, we have not verified it and make no guarantee, warranty or representation about it. It is your responsibility to independently confirm its accuracy and completeness. Any projections, opinions, assumptions or estimates used are for example only, and do not represent the current or future performance of the property. The value of this transaction to you depends on tax and other factors which should be evaluated by your tax, financial and legal advisors. You and your advisors should conduct a careful, independent investigation of the property to determine to your satisfaction the suitability of the property for your needs.





# Walmart Outparcel Available

SWC Lindsay Rd & McKellips Rd | Mesa, AZ



WWW.PHOENIXCOMMERCIALADVISORS.COM | 3131 EAST CAMELBACK ROAD, SUITE 340 | PHOENIX, AZ 85016 | 602.957.9800

## Contact

Nick DeDonna

602.734.7208

ndedona@pcaemail.com

The information contained herein has been obtained from sources believed reliable. While we do not doubt its accuracy, we have not verified it and make no guarantee, warranty or representation about it. It is your responsibility to independently confirm its accuracy and completeness. Any projections, opinions, assumptions or estimates used are for example only, and do not represent the current or future performance of the property. The value of this transaction to you depends on tax and other factors which should be evaluated by your tax, financial and legal advisors. You and your advisors should conduct a careful, independent investigation of the property to determine to your satisfaction the suitability of the property for your needs.





# Lindsay Rd & McKellips Rd

## MESA, AZ



The information presented has been obtained by private and governmental sources deemed to be reliable. Phoenix Commercial Advisors (PCA) makes no guarantees, warranties or representations of the accuracy or completeness and all information should be verified by the interested party.  
[As Of: September 18, 2019 10:01 AM]





# One Page Summary

Lindsay Rd & McKellips Rd, Mesa  
 -111.770768572 33.4518150390001  
 Rings: 1, 3, 5 mile radii

Prepared By Business Analyst Desktop

Latitude: 33.451815  
 Longitude: -111.770769

	1 mile	3 miles	5 miles
<b>Population Summary</b>			
2000 Total Population	12,501	81,180	241,642
2010 Total Population	13,421	80,034	233,376
2018 Total Population	14,344	90,665	259,023
2018 Group Quarters	88	473	2,426
2023 Total Population	15,059	97,022	275,856
2018-2023 Annual Rate	0.98%	1.36%	1.27%
2018 Total Daytime Population	9,678	74,602	228,857
Workers	1,934	24,573	82,486
Residents	7,744	50,029	146,371
<b>Household Summary</b>			
2000 Households	3,861	28,671	87,502
2000 Average Household Size	3.23	2.82	2.73
2010 Households	4,313	28,938	87,668
2010 Average Household Size	3.09	2.75	2.64
2018 Households	4,600	32,557	96,962
2018 Average Household Size	3.10	2.77	2.65
2023 Households	4,814	34,726	103,064
2023 Average Household Size	3.11	2.78	2.65
2018-2023 Annual Rate	0.91%	1.30%	1.23%
2010 Families	3,489	20,172	57,266
2010 Average Family Size	3.44	3.28	3.24
2018 Families	3,698	22,541	62,605
2018 Average Family Size	3.47	3.33	3.30
2023 Families	3,862	23,987	66,292
2023 Average Family Size	3.49	3.36	3.32
2018-2023 Annual Rate	0.87%	1.25%	1.15%
<b>Housing Unit Summary</b>			
2018 Housing Units	4,826	38,202	114,986
Owner Occupied Housing Units	75.9%	56.6%	50.8%
Renter Occupied Housing Units	19.4%	28.6%	33.5%
Vacant Housing Units	4.7%	14.8%	15.7%
<b>Median Household Income</b>			
2018	\$87,550	\$57,245	\$50,779
2023	\$98,022	\$63,909	\$56,126
<b>Median Home Value</b>			
2018	\$337,923	\$230,954	\$189,098
2023	\$377,371	\$269,630	\$227,300
<b>Average Income Value</b>			
Average Household Income	\$115,800	\$81,876	\$68,267
<b>Per Capita Income</b>			
2018	\$37,109	\$29,666	\$25,874
2023	\$42,842	\$34,218	\$30,036
<b>Median Age</b>			
2018	37.9	38.2	37.5
<b>2018 Population 25+ by Educational Attainment</b>			
Total	9,360	60,686	173,979
Less than 9th Grade	2.6%	4.2%	5.7%
9th - 12th Grade, No Diploma	2.5%	5.5%	7.0%
High School Graduate	17.9%	20.3%	23.0%
GED/Alternative Credential	2.3%	4.2%	4.1%
Some College, No Degree	21.6%	26.6%	27.6%
Associate Degree	9.1%	8.6%	8.5%
Bachelor's Degree	26.7%	20.0%	16.0%
Graduate/Professional Degree	17.4%	10.6%	8.2%

**Data Note:** Household population includes persons not residing in group quarters. Average Household Size is the household population divided by total households. Persons in families include the householder and persons related to the householder by birth, marriage, or adoption. Per Capita Income represents the income received by all persons aged 15 years and over divided by the total population.

**Source:** U.S. Census Bureau, Census 2010 Data. Esri forecasts for 2018 and 2023

October 12, 2018

Made with Esri Business Analyst