

# DESERT RIDGE MARKETPLACE

NEC Tatum Blvd & Loop 101 | Phoenix, AZ



Another project of:



PHOENIX COMMERCIAL ADVISORS IS THE EXCLUSIVE LISTING AGENT  
FOR THE EXTERIOR SHOP BUILDINGS AND FREE STANDING PADS

[WWW.PHOENIXCOMMERCIALADVISORS.COM](http://WWW.PHOENIXCOMMERCIALADVISORS.COM) | 3131 E CAMELBACK RD #340 | PHOENIX, AZ 85016 | 602.957.9800

**Zachary Pace**  
602.734.7212  
[zpace@pcaemail.com](mailto:zpace@pcaemail.com)

**Cameron Warren**  
602.288.3471  
[cwarren@pcaemail.com](mailto:cwarren@pcaemail.com)

**Torrey Briegel**  
602.734.7219  
[tbriegel@pcaemail.com](mailto:tbriegel@pcaemail.com)

The information contained herein has been obtained from sources believed reliable. While we do not doubt its accuracy, we have not verified it and make no guarantee, warranty or representation about it. It is your responsibility to independently confirm its accuracy and completeness. Any projections, opinions, assumptions or estimates used are for example only, and do not represent the current or future performance of the property. The value of this transaction to you depends on tax and other factors which should be evaluated by your tax, financial and legal advisors. You and your advisors should conduct a careful, independent investigation of the property to determine to your satisfaction the suitability of the property for your needs.

[02/19/20]



# DESERT RIDGE MARKETPLACE

NEC Tatum Blvd & Loop 101 | Phoenix, AZ

## Property Summary

**Property Type:** Regional entertainment, lifestyle and power center

**Property Size:** ±1,200,000 gross leasable square feet

**Tenants Include:** Target, AMC 18 Theatres, Barnes & Noble, Albertsons, Ross, Old Navy, Marshalls/Home Goods, JoAnn, Kohl's, Dave & Buster's, Total Wine & More, PetSmart and DSW Shoes

<b>Demographics:</b>	<b>Population:</b>	<b>3 Miles</b>	<b>5 Miles</b>	<b>7 Miles</b>
	2018 Total Population	64,807	205,556	352,230
	2023 Total Population	70,088	222,262	379,666
	<b>Average HH Income:</b>	<b>3 Miles</b>	<b>5 Miles</b>	<b>7 Miles</b>
	2018 Total	\$100,227	\$95,056	\$101,611

**Over 22 million visitors per year visit Desert Ridge Marketplace.**

## Property Description



Desert Ridge Marketplace is a super-regional open-air shopping center located just off the Loop 101 and Tatum Boulevard in North Phoenix, Arizona. It was built by Vestar and opened in December 2001. This beautiful lifestyle and entertainment experience offers great shopping, live music, more than 30 eateries, an 18 screen luxury cinema, fountains and more with convenient access from Loop 101.

Desert Ridge Marketplace features retailers such as Old Navy, American Eagle Outfitters, Barnes & Noble, Target, Kohl's, PetSmart, DSW, Pier 1 Imports and Famous Footwear. Entertainment retail elements include AMC Desert Ridge 18 Theatre, Dave & Buster's, and live music every Friday and Saturday night.

Restaurant destinations include Yard House, California Pizza Kitchen, The Keg, Macaroni Grill, Sandbar, Sweet Tomatoes, Islands, Majerle's, Flower Child, Barrio Queen, Thirsty Lion and BJ's Restaurant & Brewhouse plus multiple other popular fine eateries.

[WWW.PHOENIXCOMMERCIALADVISORS.COM](http://WWW.PHOENIXCOMMERCIALADVISORS.COM) | 3131 E CAMELBACK RD #340 | PHOENIX, AZ 85016 | 602.957.9800

**Zachary Pace**  
602.734.7212  
zpace@pcaemail.com

**Cameron Warren**  
602.288.3471  
cwarren@pcaemail.com

**Torrey Briegel**  
602.734.7219  
tbriegel@pcaemail.com

The information contained herein has been obtained from sources believed reliable. While we do not doubt its accuracy, we have not verified it and make no guarantee, warranty or representation about it. It is your responsibility to independently confirm its accuracy and completeness. Any projections, opinions, assumptions or estimates used are for example only, and do not represent the current or future performance of the property. The value of this transaction to you depends on tax and other factors which should be evaluated by your tax, financial and legal advisors. You and your advisors should conduct a careful, independent investigation of the property to determine to your satisfaction the suitability of the property for your needs.

[02/19/20]



# DESERT RIDGE MARKETPLACE

NEC Tatum Blvd & Loop 101 | Phoenix, AZ



**Zachary Pace**  
602.734.7212  
zpace@pcaemail.com

**Cameron Warren**  
602.288.3471  
cwarren@pcaemail.com

**Torrey Briegel**  
602.734.7219  
tbriegel@pcaemail.com

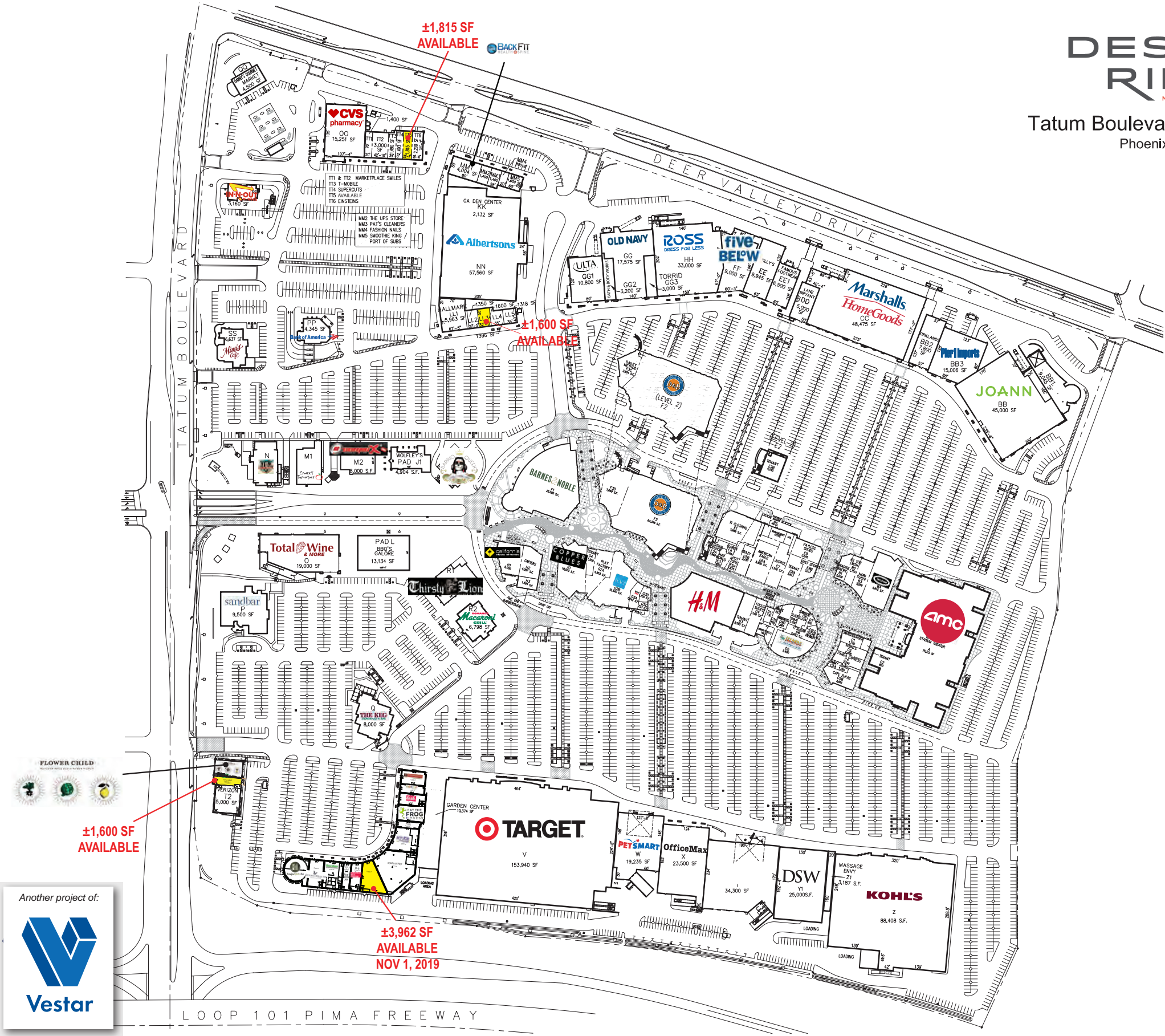
The information contained herein has been obtained from sources believed reliable. While we do not doubt its accuracy, we have not verified it and make no guarantee, warranty or representation about it. It is your responsibility to independently confirm its accuracy and completeness. Any projections, opinions, assumptions or estimates used are for example only, and do not represent the current or future performance of the property. The value of this transaction to you depends on tax and other factors which should be evaluated by your tax, financial and legal advisors. You and your advisors should conduct a careful, independent investigation of the property to determine to your satisfaction the suitability of the property for your needs.

[02/19/20]



DESERT  
RIDGE  
MARKETPLACE

Tatum Boulevard and Loop 101  
Phoenix, Arizona



DESERT RIDGE MARKETPLACE

ENTERTAINMENT DISTRICT	322,035 SF
SOFT GOODS DISTRICT	220,347 SF
DESIGN DISTRICT	55,507 SF
NEIGHBORHOOD DISTRICT/PADS	231,349 SF
HARD GOODS DISTRICT	330,335 SF
TOTAL	1,159,573 SF

\* SQUARE FOOTAGES DO NOT INCLUDE GARDEN CENTERS OR DEVELOPERS BACK OF HOUSE AREAS.

PARKING

	REQUIRED	PROVIDED
RETAIL SPACES (Including Theater Area)		
1,153,361 SF	3,460	5,026
THEATER SPACES		
3,146 SEATS		
1 SPACE / 4 SEATS	---	789
TOTAL	3,460	5,815
SPACES / 1000 SF	3.00	5.05



04-02-14  
LEASING SITE PLAN

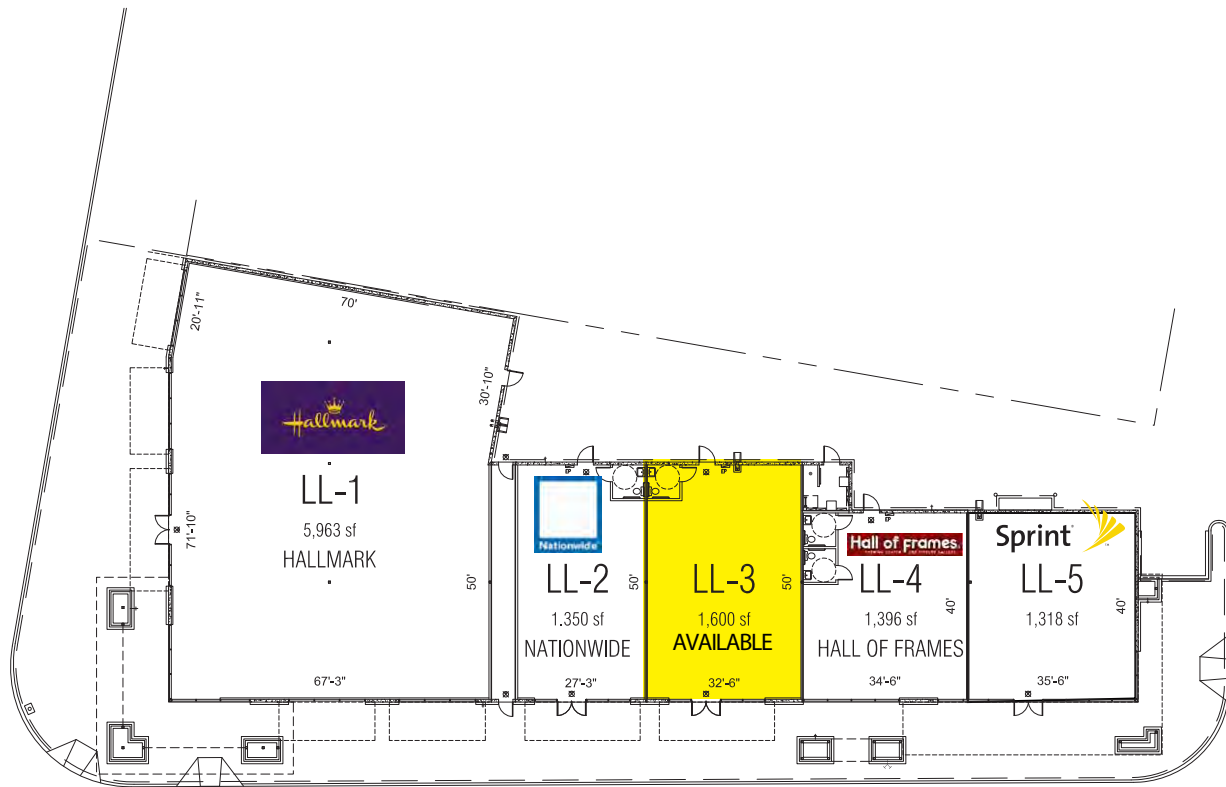


Another project of:



# DESERT RIDGE MARKETPLACE

NEC Tatum Blvd & Loop 101 | Phoenix, AZ



Shops LL - Total Leasable Area = 11,627 sf



[WWW.PHOENIXCOMMERCIALADVISORS.COM](http://WWW.PHOENIXCOMMERCIALADVISORS.COM) | 3131 E CAMELBACK RD #340 | PHOENIX, AZ 85016 | 602.957.9800

**Zachary Pace**  
602.734.7212  
[zpace@pcaemail.com](mailto:zpace@pcaemail.com)

**Cameron Warren**  
602.288.3471  
[cwarren@pcaemail.com](mailto:cwarren@pcaemail.com)

**Torrey Briegel**  
602.734.7219  
[tbriegel@pcaemail.com](mailto:tbriegel@pcaemail.com)

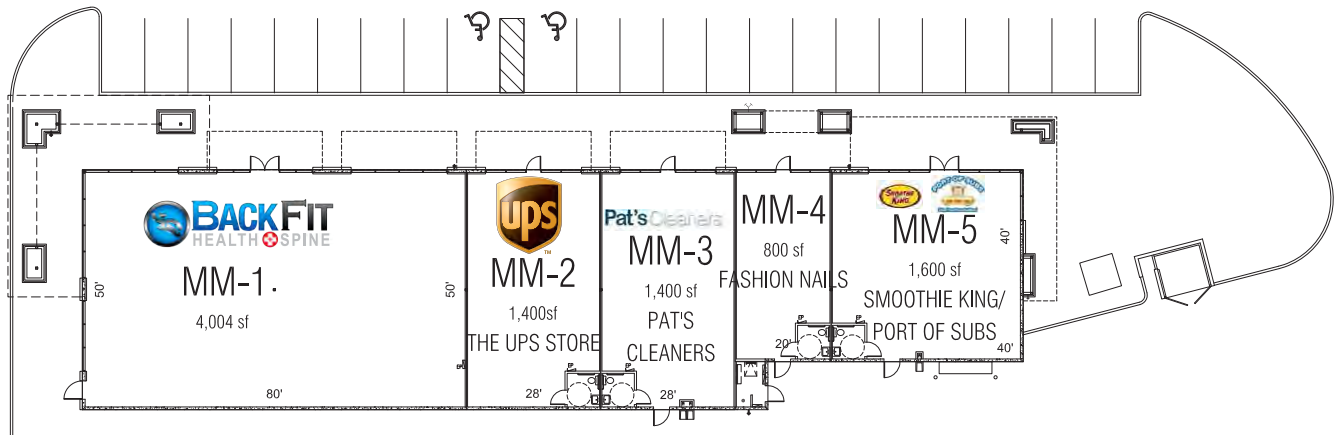
The information contained herein has been obtained from sources believed reliable. While we do not doubt its accuracy, we have not verified it and make no guarantee, warranty or representation about it. It is your responsibility to independently confirm its accuracy and completeness. Any projections, opinions, assumptions or estimates used are for example only, and do not represent the current or future performance of the property. The value of this transaction to you depends on tax and other factors which should be evaluated by your tax, financial and legal advisors. You and your advisors should conduct a careful, independent investigation of the property to determine to your satisfaction the suitability of the property for your needs.

[02/19/20]



# DESERT RIDGE MARKETPLACE

NEC Tatum Blvd & Loop 101 | Phoenix, AZ



Shops MM - Total Leasable Area = 9,204 sf



[WWW.PHOENIXCOMMERCIALADVISORS.COM](http://WWW.PHOENIXCOMMERCIALADVISORS.COM) | 3131 E CAMELBACK RD #340 | PHOENIX, AZ 85016 | 602.957.9800

**Zachary Pace**  
602.734.7212  
zpace@pcaemail.com

**Cameron Warren**  
602.288.3471  
cwarren@pcaemail.com

**Torrey Briegel**  
602.734.7219  
tbriegel@pcaemail.com

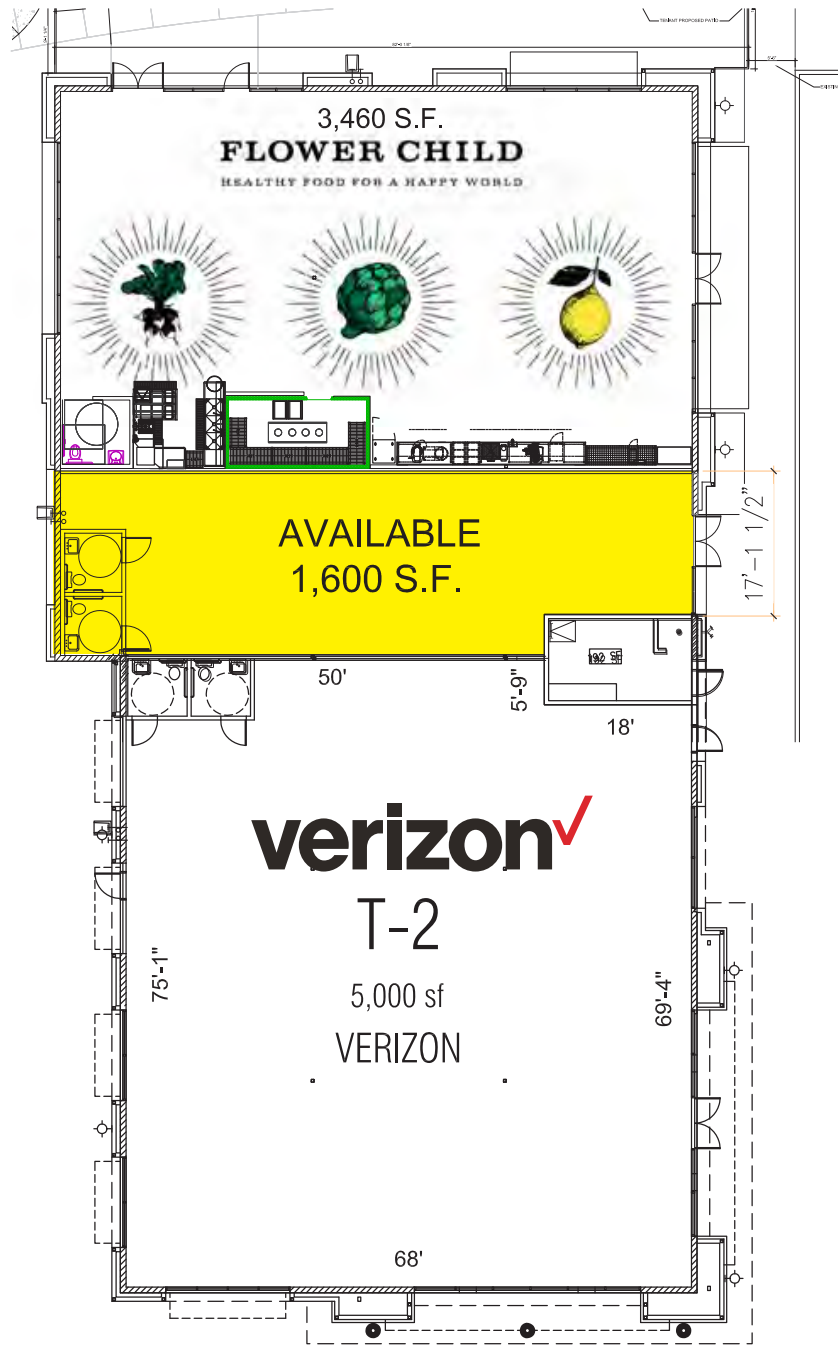
The information contained herein has been obtained from sources believed reliable. While we do not doubt its accuracy, we have not verified it and make no guarantee, warranty or representation about it. It is your responsibility to independently confirm its accuracy and completeness. Any projections, opinions, assumptions or estimates used are for example only, and do not represent the current or future performance of the property. The value of this transaction to you depends on tax and other factors which should be evaluated by your tax, financial and legal advisors. You and your advisors should conduct a careful, independent investigation of the property to determine to your satisfaction the suitability of the property for your needs.

[02/19/20]



# DESERT RIDGE MARKETPLACE

NEC Tatum Blvd & Loop 101 | Phoenix, AZ



[WWW.PHOENIXCOMMERCIALADVISORS.COM](http://WWW.PHOENIXCOMMERCIALADVISORS.COM) | 3131 E CAMELBACK RD #340 | PHOENIX, AZ 85016 | 602.957.9800

**Zachary Pace**  
602.734.7212  
zpace@pcaemail.com

**Cameron Warren**  
602.288.3471  
cwarren@pcaemail.com

**Torrey Briegel**  
602.734.7219  
tbriegel@pcaemail.com

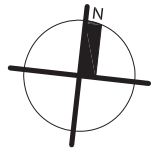
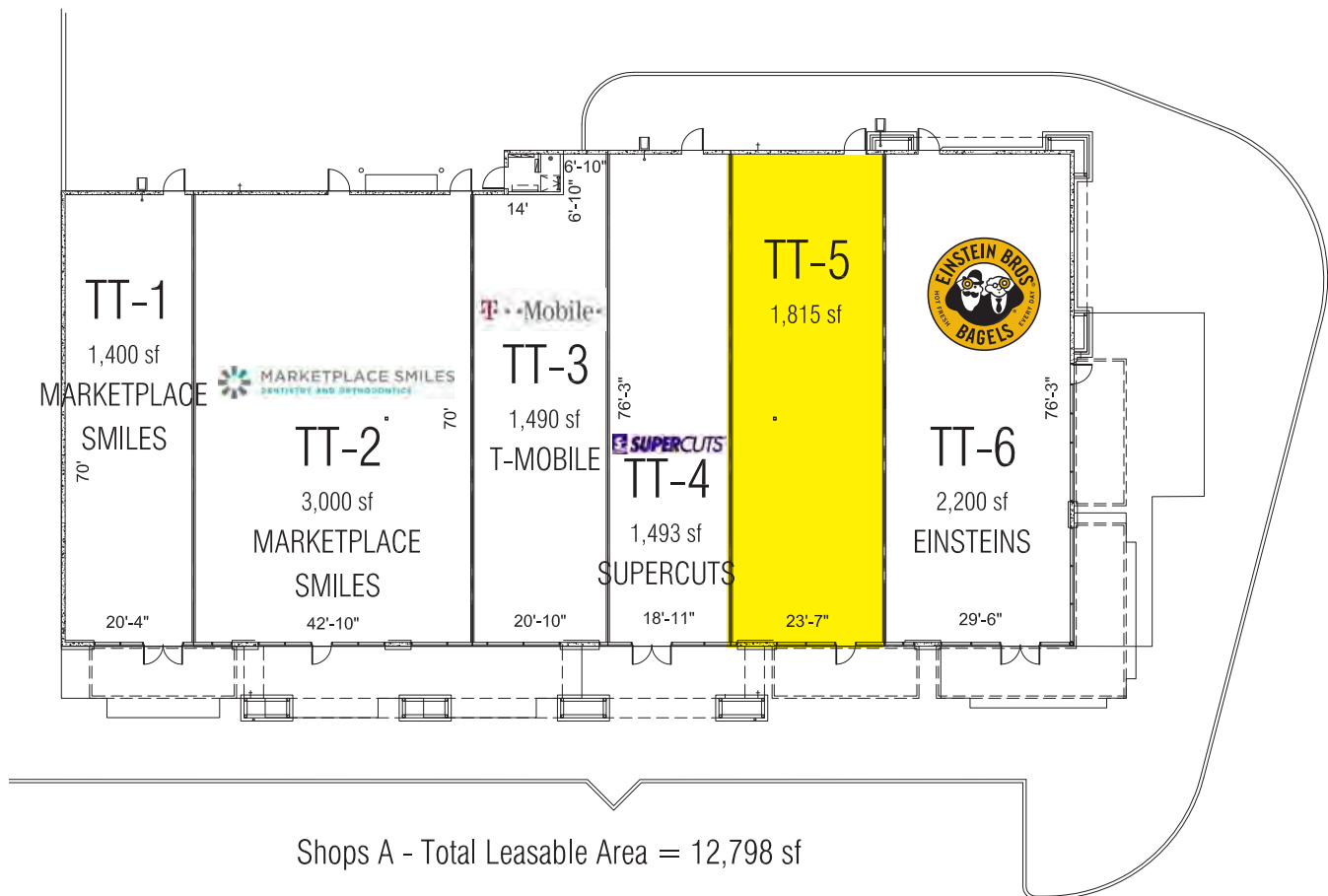
The information contained herein has been obtained from sources believed reliable. While we do not doubt its accuracy, we have not verified it and make no guarantee, warranty or representation about it. It is your responsibility to independently confirm its accuracy and completeness. Any projections, opinions, assumptions or estimates used are for example only, and do not represent the current or future performance of the property. The value of this transaction to you depends on tax and other factors which should be evaluated by your tax, financial and legal advisors. You and your advisors should conduct a careful, independent investigation of the property to determine to your satisfaction the suitability of the property for your needs.

[02/19/20]



# DESERT RIDGE MARKETPLACE

NEC Tatum Blvd & Loop 101 | Phoenix, AZ



[WWW.PHOENIXCOMMERCIALADVISORS.COM](http://WWW.PHOENIXCOMMERCIALADVISORS.COM) | 3131 E CAMELBACK RD #340 | PHOENIX, AZ 85016 | 602.957.9800

**Zachary Pace**  
602.734.7212  
zpace@pcaemail.com

**Cameron Warren**  
602.288.3471  
cwarren@pcaemail.com

**Torrey Briegel**  
602.734.7219  
tbriegel@pcaemail.com

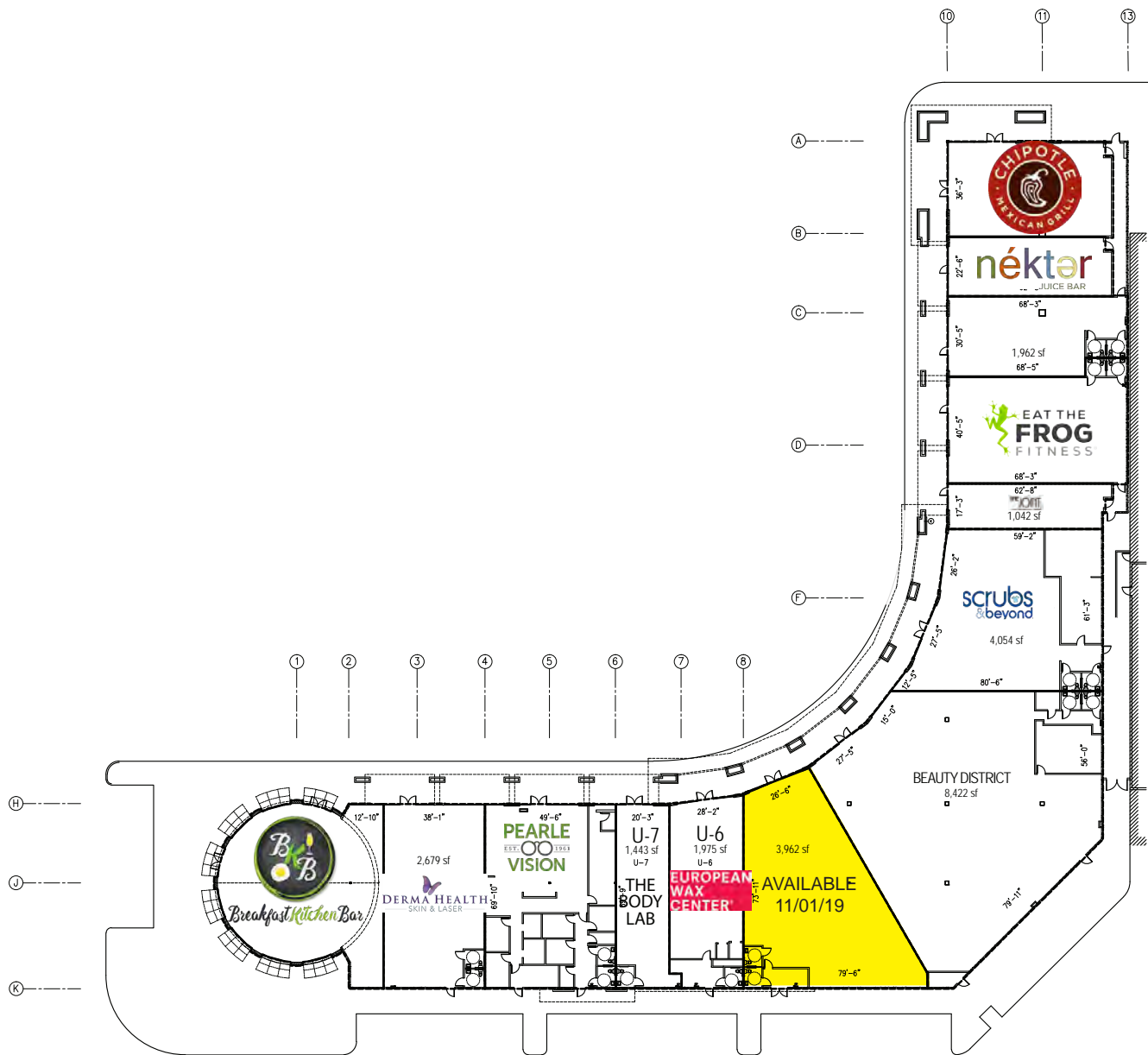
The information contained herein has been obtained from sources believed reliable. While we do not doubt its accuracy, we have not verified it and make no guarantee, warranty or representation about it. It is your responsibility to independently confirm its accuracy and completeness. Any projections, opinions, assumptions or estimates used are for example only, and do not represent the current or future performance of the property. The value of this transaction to you depends on tax and other factors which should be evaluated by your tax, financial and legal advisors. You and your advisors should conduct a careful, independent investigation of the property to determine to your satisfaction the suitability of the property for your needs.

[02/19/20]



# DESERT RIDGE MARKETPLACE

NEC Tatum Blvd & Loop 101 | Phoenix, AZ



[WWW.PHOENIXCOMMERCIALADVISORS.COM](http://WWW.PHOENIXCOMMERCIALADVISORS.COM) | 3131 E CAMELBACK RD #340 | PHOENIX, AZ 85016 | 602.957.9800

**Zachary Pace**  
602.734.7212  
zpace@pcaemail.com

**Cameron Warren**  
602.288.3471  
cwarren@pcaemail.com

**Torrey Briegel**  
602.734.7219  
tbriegel@pcaemail.com

The information contained herein has been obtained from sources believed reliable. While we do not doubt its accuracy, we have not verified it and make no guarantee, warranty or representation about it. It is your responsibility to independently confirm its accuracy and completeness. Any projections, opinions, assumptions or estimates used are for example only, and do not represent the current or future performance of the property. The value of this transaction to you depends on tax and other factors which should be evaluated by your tax, financial and legal advisors. You and your advisors should conduct a careful, independent investigation of the property to determine to your satisfaction the suitability of the property for your needs. [02/19/20]



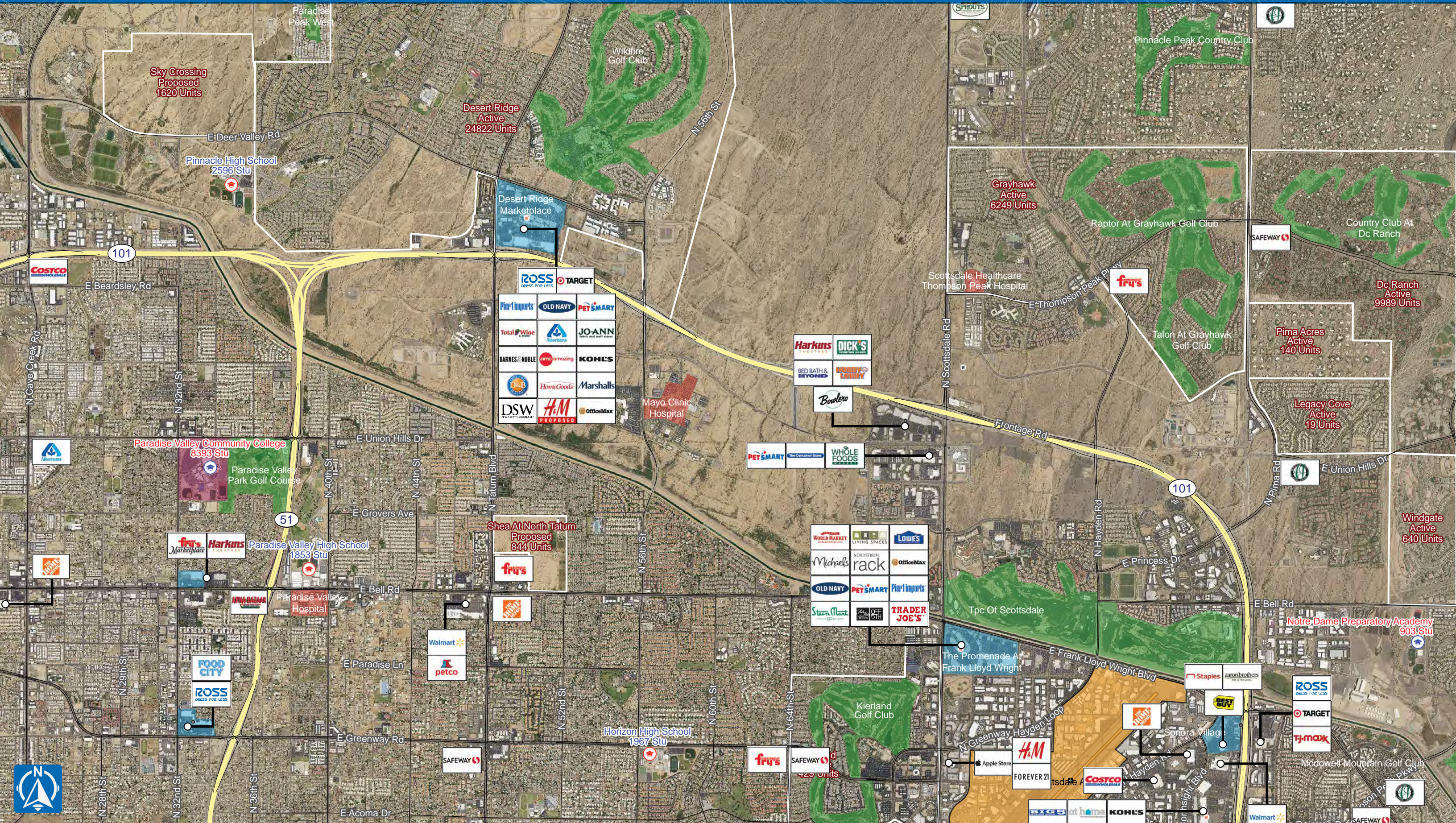


**PCA**  
PHOENIX COMMERCIAL ADVISORS  
A MEMBER OF CHAINLINKS RETAIL ADVISORS

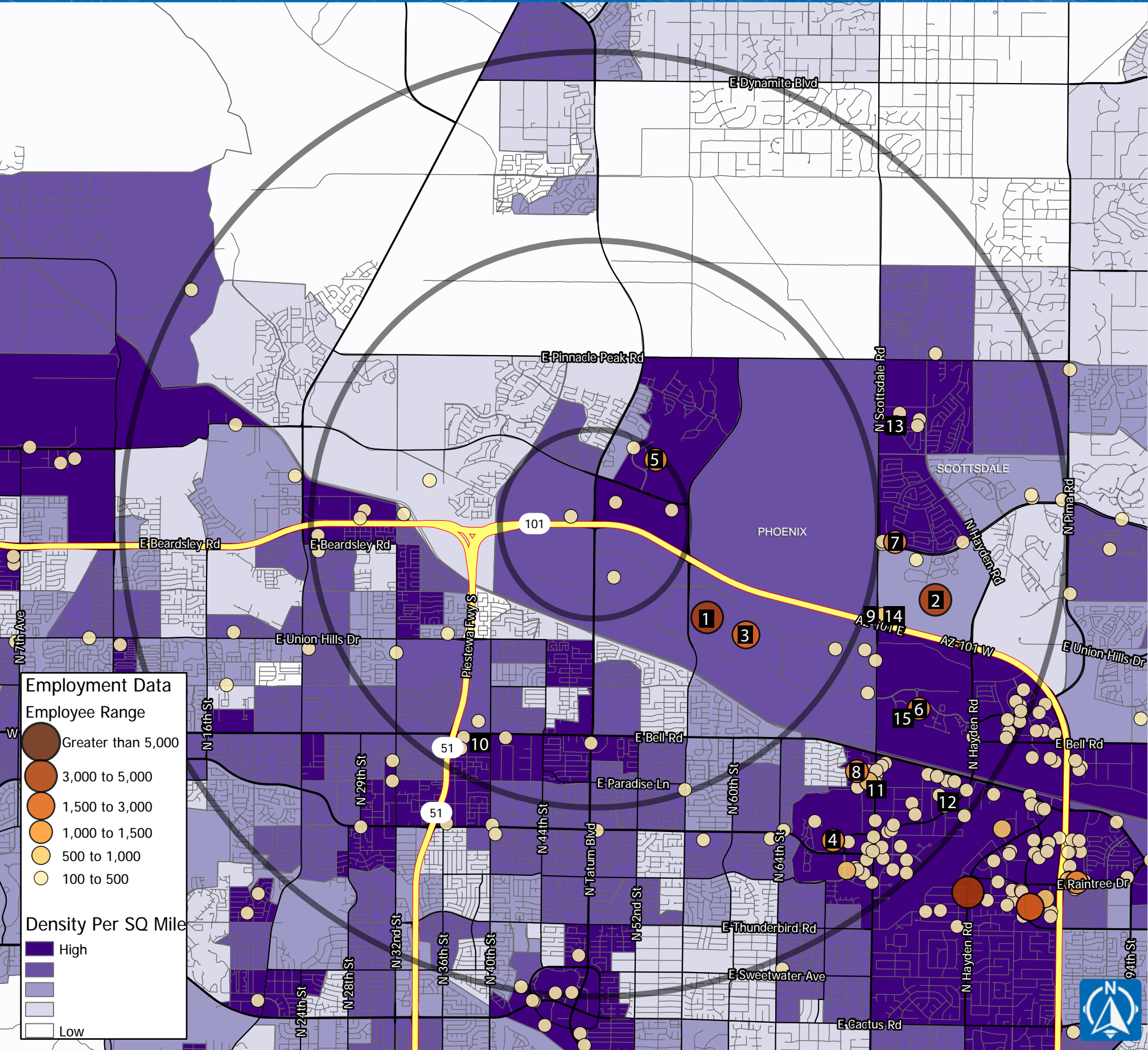


# Tatum Blvd & Loop 101

## PHOENIX, AZ



Tatum Blvd & Loop 101  
PHOENIX, AZ



DAYTIME POPULATION			
	1 Mile Radius	3 Mile Radius	5 Mile Radius
2018 Daytime Population:	8,559	60,788	194,428
Workers	7,021	31,301	99,563
Residents	1,538	29,487	94,865
Est. Total Businesses	325	1,889	7,274

\*Source ESRI 2018 Estimates

**1** Mayo Clinic Hospital  
±6,500 Employees

**6** Fairmont Scottsdale Princess  
±1,150 Employees

**11** Apl Logistics  
±700 Employees

**2** Future Nationwide Campus (Planned)  
±5,500 Employees

**7** Scottsdale Health-care Corp  
±1,024 Employees

**12** Site 756  
±700 Employees

**3** Mayo Clinic (Future Expansion)  
±2,000 Employees

**8** BGRS  
±1,010 Employees

**13** Chas Roberts Air Conditioning  
±600 Employees

**4** Westin-Kierland Resort & Spa  
±1,500 Employees

**9** The Dial Corporation  
±775 Employees

**14** Henkel Consumer Goods  
±600 Employees

**5** J W Marriott-Phoenix Desert  
±1,200 Employees

**10** Abrazo Scottsdale  
±750 Employees

**15** Well & Being At Willow Stream  
±600 Employees

TOP 40 COMPANIES/EMPLOYMENT COUNT WITHIN 5 MILES			
Company	# Employees	Company	# Employees
Mayo Clinic Hospital	6500	Sprouts Farmers Market Inc	420
Future Nationwide Campus (Planned)	5500	Mollen Immunization Clinics	414
Mayo Clinic (Future Expansion)	2000	Food Services Of America	400
Westin-Kierland Resort & Spa	1500	Sears Vactations	400
J W Marriott-Phoenix Desert	1200	Sumco Phoenix Corp	400
Fairmont Scottsdale Princess	1150	West Usa Realty	380
Scottsdale Healthcare Corp	1024	Dbl Distributing Llc	375
Bgrs	1010	Rummel Construction Inc	367
The Dial Corporation	775	Choice Hotels Intl	350
Abrazo Scottsdale	750	Cobblestone Auto Spa	350
Apl Logistics	700	Skill Soft	307
Site 756	700	Ames Construction	300
Chas Roberts Air Conditioning	600	Cheesecake Factory	300
Henkel Consumer Goods	600	Durango Stone	300
Well & Being At Willow Stream	600	Fender Musical Instruments	300
Enchantment Group Llc	555	First National Financial Svc	300
Bhhs Arizona Properties	500	Honor Health Thompson Peak	300
Pag West Llc	500	Right Honda	300
Phoenix Cfa Society	500	West Usa Realty International	300
Reinhart Boerner Van Deuren Sc	450	World Wide Stone Corporation	300

The information presented has been obtained by private and governmental sources deemed to be reliable. Phoenix Commercial Advisors (PCA) makes no guarantees, warranties or representations of the accuracy or completeness and all information should be verified by the interested party.  
[As Of: 02/04/2019]



## One Page Summary

Tatum Blvd & Loop 101, Phoenix  
-111.977430474 33.6730068480001  
Rings: 3, 5, 7 mile radii

Prepared By Business Analyst Desktop

Latitude: 33.673007  
Longitude: -111.97743

	3 miles	5 miles	7 miles
<b>Population Summary</b>			
2000 Total Population	49,553	167,382	297,907
2010 Total Population	55,422	180,683	312,662
2018 Total Population	64,807	205,556	352,230
2018 Group Quarters	688	1,537	2,357
2023 Total Population	70,088	222,262	379,666
2018-2023 Annual Rate	1.58%	1.58%	1.51%
2018 Total Daytime Population	60,820	194,432	374,524
Workers	31,302	99,565	210,582
Residents	29,518	94,867	163,942
<b>Household Summary</b>			
2000 Households	19,029	63,882	116,596
2000 Average Household Size	2.58	2.60	2.54
2010 Households	22,844	73,529	129,249
2010 Average Household Size	2.40	2.44	2.40
2018 Households	26,475	83,647	145,271
2018 Average Household Size	2.42	2.44	2.41
2023 Households	28,592	90,412	156,280
2023 Average Household Size	2.43	2.44	2.41
2018-2023 Annual Rate	1.55%	1.57%	1.47%
2010 Families	14,370	46,241	81,360
2010 Average Family Size	3.00	3.03	2.98
2018 Families	16,223	51,561	90,050
2018 Average Family Size	3.09	3.09	3.04
2023 Families	17,395	55,366	96,425
2023 Average Family Size	3.13	3.12	3.07
2018-2023 Annual Rate	1.40%	1.43%	1.38%
<b>Housing Unit Summary</b>			
2018 Housing Units	28,836	92,754	160,319
Owner Occupied Housing Units	58.5%	56.2%	57.6%
Renter Occupied Housing Units	33.3%	34.0%	33.0%
Vacant Housing Units	8.2%	9.8%	9.4%
<b>Median Household Income</b>			
2018	\$76,628	\$69,117	\$72,374
2023	\$84,754	\$78,109	\$80,959
<b>Median Home Value</b>			
2018	\$306,732	\$296,536	\$311,989
2023	\$351,572	\$335,633	\$349,381
<b>Average Income Value</b>			
Average Household Income	\$100,227	\$95,056	\$101,611
<b>Per Capita Income</b>			
2018	\$41,479	\$39,001	\$42,225
2023	\$47,843	\$45,096	\$48,632
<b>Median Age</b>			
2018	39.1	39.1	40.9
<b>2018 Population 25+ by Educational Attainment</b>			
Total	46,225	144,469	251,438
Less than 9th Grade	1.8%	3.2%	2.8%
9th - 12th Grade, No Diploma	2.9%	4.5%	4.2%
High School Graduate	13.6%	15.6%	14.8%
GED/Alternative Credential	2.1%	2.4%	2.3%
Some College, No Degree	21.8%	22.1%	22.6%
Associate Degree	7.5%	8.1%	8.1%
Bachelor's Degree	31.9%	28.5%	28.4%
Graduate/Professional Degree	18.5%	15.6%	16.6%

**Data Note:** Household population includes persons not residing in group quarters. Average Household Size is the household population divided by total households. Persons in families include the householder and persons related to the householder by birth, marriage, or adoption. Per Capita Income represents the income received by all persons aged 15 years and over divided by the total population.

**Source:** U.S. Census Bureau, Census 2010 Data. Esri forecasts for 2018 and 2023

February 27, 2019

Made with Esri Business Analyst