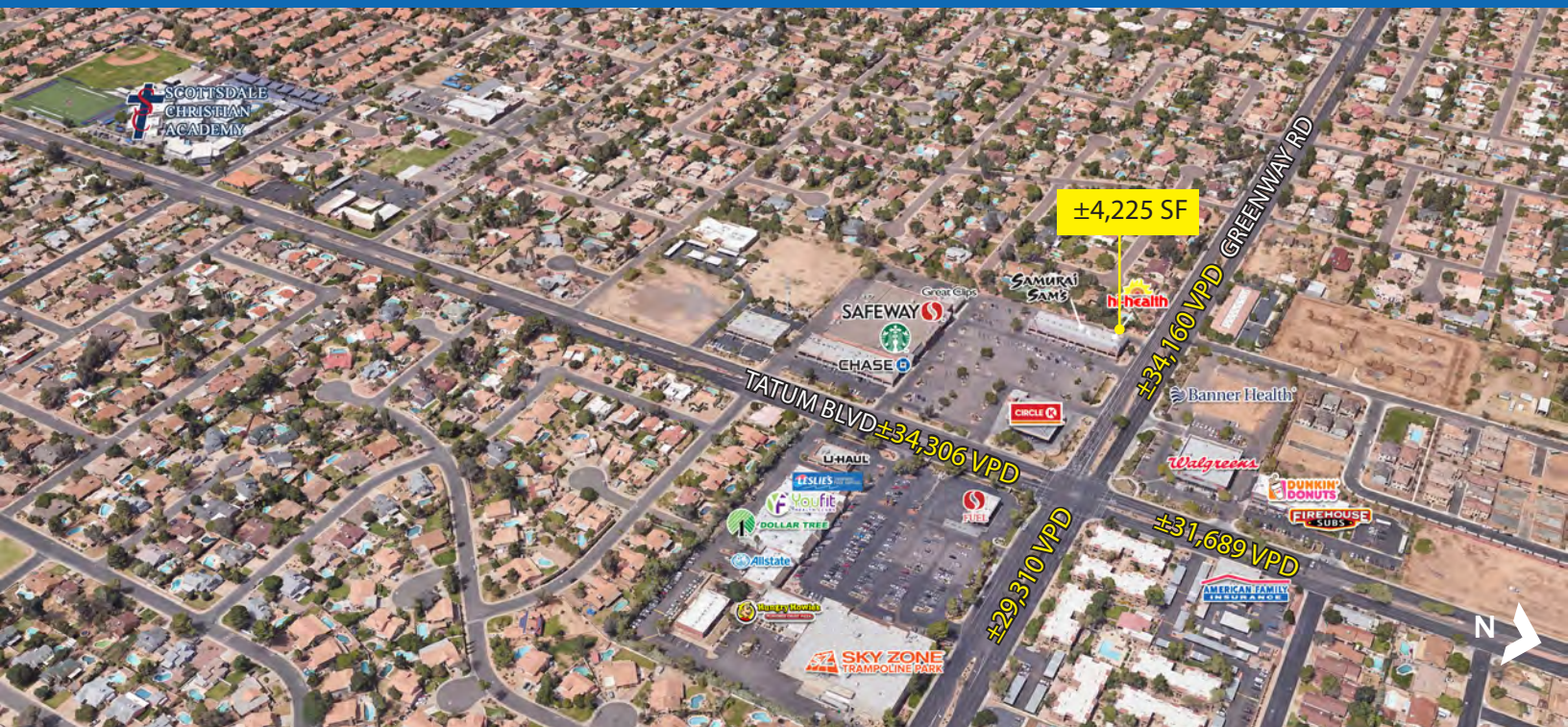


LAST SUITE AVAILABLE: ±4,225 SF ENDCAP New Safeway Store Now Open

SWC Tatum Blvd & Greenway Rd | Phoenix, AZ



PROPERTY DETAILS

Available: ±4,225 SF
Rate: Call for rate
Zoning: C-1, City of Phoenix

PROPERTY HIGHLIGHTS

- New Safeway store now open
- No restaurant restrictions

JOIN



DEMOGRAPHICS

	1 Mile	3 Miles	5 Miles
2019 Population	14,039	122,498	247,059
2024 Total Population	14,632	129,867	265,725
2019 Med HH Income	\$98,881	\$71,607	\$75,397
2019 Total Daytime Pop	10,846	111,883	281,550
Workers	4,438	55,676	166,910
Residents	6,408	56,207	114,640

ESRI 2019 Estimates

TRAFFIC COUNTS

N: ±31,689 VPD (NB & SB) E: ±29,310 VPD (EB & WB)
S: ±34,306 VPD (NB & SB) W: ±34,160 VPD (EB & WB)

ADOT 2017, Phoenix 2014

WWW.PHOENIXCOMMERCIALADVISORS.COM | 3131 E CAMELBACK RD #340 | PHOENIX, AZ 85016 | 602.957.9800

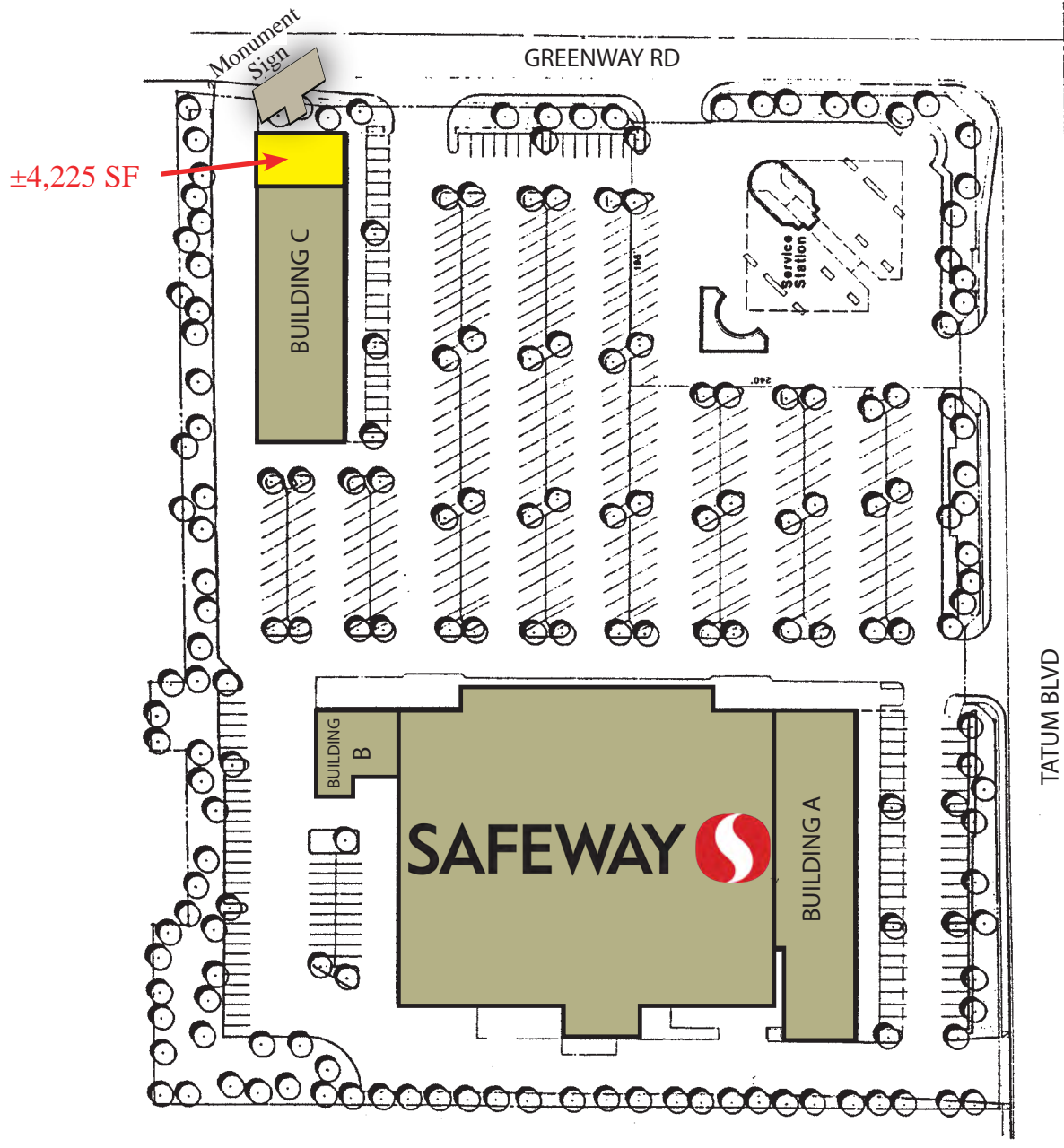
Cameron Warren
602.288.3471
cwarren@pcaemail.com



The information contained herein has been obtained from sources believed reliable. While we do not doubt its accuracy, we have not verified it and make no guarantee, warranty or representation about it. It is your responsibility to independently confirm its accuracy and completeness. Any projections, opinions, assumptions or estimates used are for example only, and do not represent the current or future performance of the property. The value of this transaction to you depends on tax and other factors which should be evaluated by your tax, financial and legal advisors. You and your advisors should conduct a careful, independent investigation of the property to determine to your satisfaction the suitability of the property for your needs. [05/13/20]

LAST SUITE AVAILABLE: ±4,225 SF ENDCAP New Safeway Store Now Open

SWC Tatum Blvd & Greenway Rd | Phoenix, AZ



WWW.PHOENIXCOMMERCIALADVISORS.COM | 3131 E CAMELBACK RD #340 | PHOENIX, AZ 85016 | 602.957.9800

Cameron Warren
602.288.3471
cwarren@pcaemail.com

The information contained herein has been obtained from sources believed reliable. While we do not doubt its accuracy, we have not verified it and make no guarantee, warranty or representation about it. It is your responsibility to independently confirm its accuracy and completeness. Any projections, opinions, assumptions or estimates used are for example only, and do not represent the current or future performance of the property. The value of this transaction to you depends on tax and other factors which should be evaluated by your tax, financial and legal advisors. You and your advisors should conduct a careful, independent investigation of the property to determine to your satisfaction the suitability of the property for your needs.

[05/13/20]

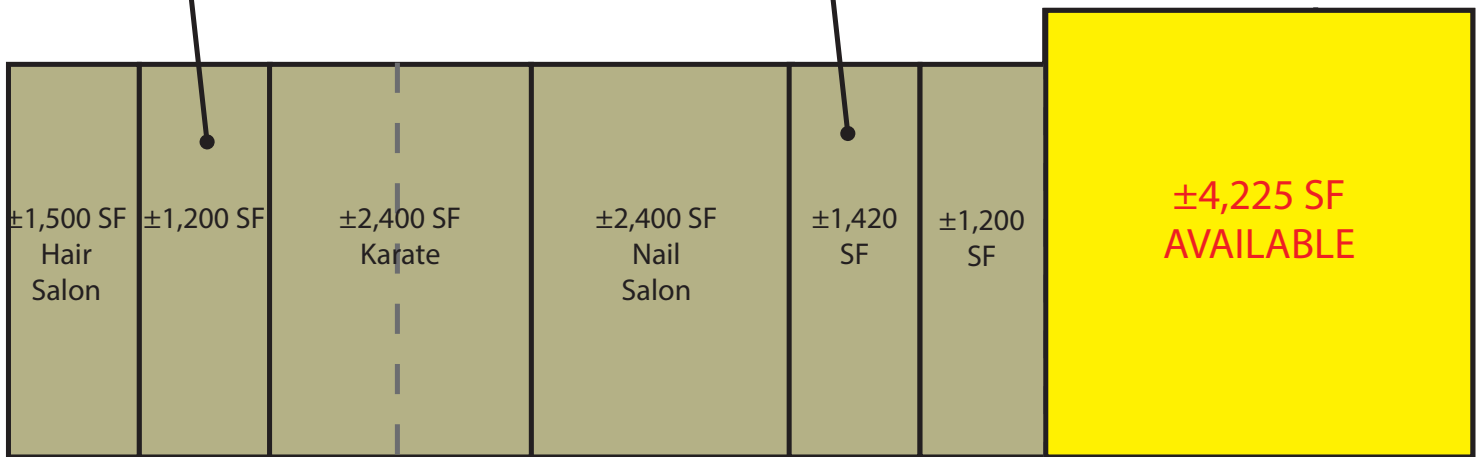


LAST SUITE AVAILABLE: ±4,225 SF ENDCAP New Safeway Store Now Open

SWC Tatum Blvd & Greenway Rd | Phoenix, AZ

Jackson Hewitt
WHERE TAXES ARE LESS TAXING

**SAMURAI
SAM'S**



WWW.PHOENIXCOMMERCIALADVISORS.COM | 3131 E CAMELBACK RD #340 | PHOENIX, AZ 85016 | 602.957.9800

Cameron Warren
602.288.3471
cwarren@pcaemail.com



The information contained herein has been obtained from sources believed reliable. While we do not doubt its accuracy, we have not verified it and make no guarantee, warranty or representation about it. It is your responsibility to independently confirm its accuracy and completeness. Any projections, opinions, assumptions or estimates used are for example only, and do not represent the current or future performance of the property. The value of this transaction to you depends on tax and other factors which should be evaluated by your tax, financial and legal advisors. You and your advisors should conduct a careful, independent investigation of the property to determine to your satisfaction the suitability of the property for your needs.

[05/13/20]



SUPERCUTS
PIZZERIA

FIREHOUSE SUBS
DUNKIN'

W

GREENWAY RD

±33,782 VPD

±29,310 VPD

GREENWAY RD



SAMURAI SAM'S
SUSHI & GRILL

K

Great Clips

SAFEMAY

Sprint

STREET'S OF NEW YORK

TATUM BLVD

±31,265 VPD

±35,487 VPD

TATUM BLVD

Youfit
HEALTH CLUBS

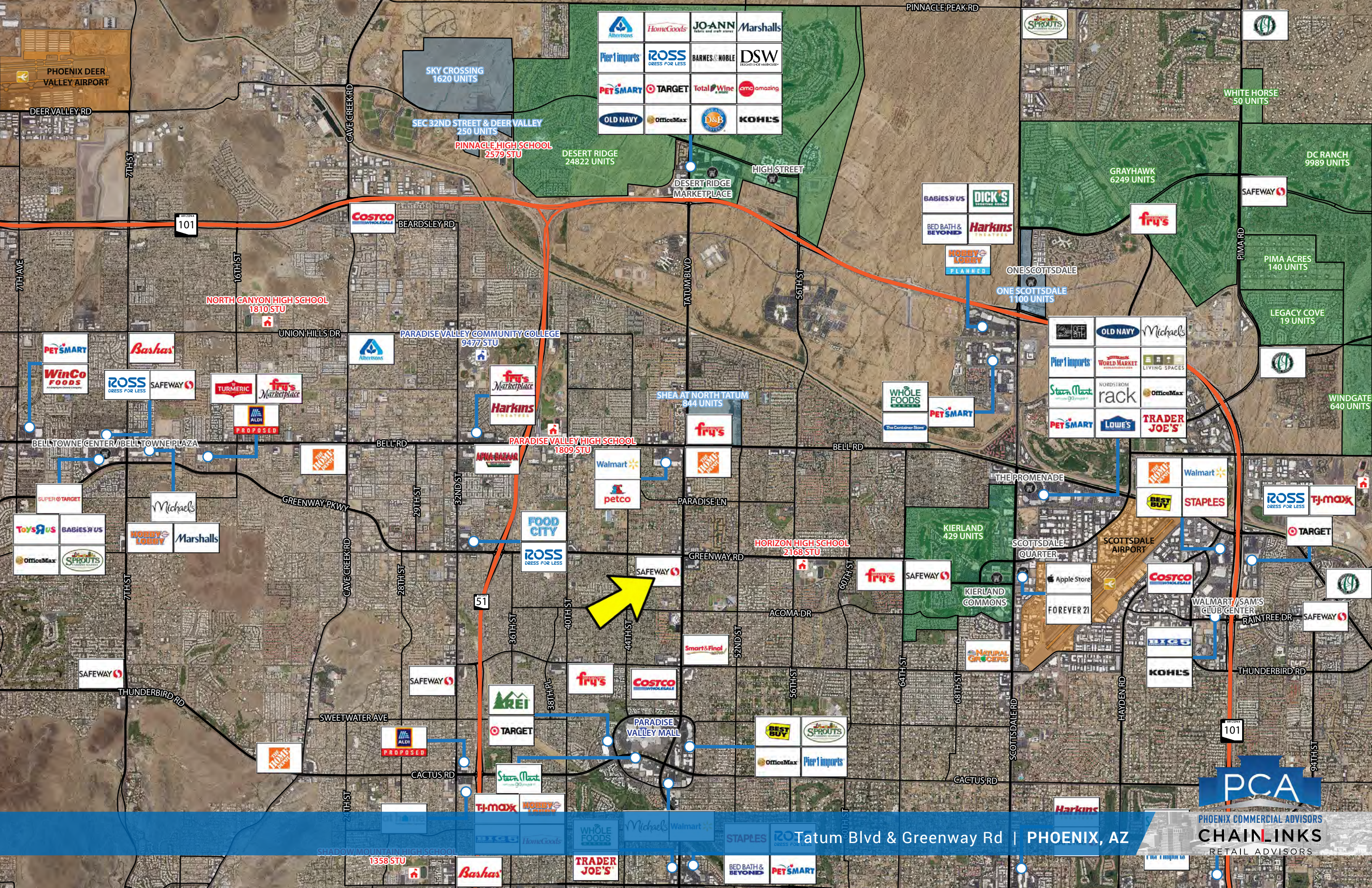
DOLLAR TREE

Hungry Howies
CLEANER BURGERS

PCA

PHOENIX COMMERCIAL ADVISORS
CHAINLINKS
RETAIL ADVISORS

Tatum Blvd & Greenway Rd | PHOENIX, AZ



Tatum Blvd & Greenway Rd | PHOENIX, AZ



One Page Summary

Tatum Blvd & Greenway Rd, Phoenix
 -111.977808483 33.626121218
 Rings: 1, 3, 5 mile radii

Prepared By Business Analyst Desktop
 Latitude: 33.626121
 Longitude: -111.977808

	1 mile	3 miles	5 miles
Population Summary			
2000 Total Population	14,714	117,668	216,400
2010 Total Population	13,217	111,316	218,391
2019 Total Population	14,039	122,498	247,059
2019 Group Quarters	223	1,286	2,165
2024 Total Population	14,632	129,867	265,725
2019-2024 Annual Rate	0.83%	1.18%	1.47%
2019 Total Daytime Population	10,846	111,883	281,550
Workers	4,438	55,676	166,910
Residents	6,408	56,207	114,640
Household Summary			
2000 Households	5,154	44,453	84,122
2000 Average Household Size	2.81	2.62	2.55
2010 Households	5,099	44,988	90,703
2010 Average Household Size	2.55	2.45	2.39
2019 Households	5,409	49,863	102,620
2019 Average Household Size	2.55	2.43	2.39
2024 Households	5,627	52,941	110,317
2024 Average Household Size	2.56	2.43	2.39
2019-2024 Annual Rate	0.79%	1.21%	1.46%
2010 Families	3,791	28,372	56,136
2010 Average Family Size	2.93	3.03	2.98
2019 Families	3,976	30,535	61,904
2019 Average Family Size	2.94	3.05	3.02
2024 Families	4,123	32,121	66,095
2023 Average Family Size	2.95	3.05	3.03
2019-2024 Annual Rate	0.73%	1.02%	1.32%
Housing Unit Summary			
2019 Housing Units	5,618	54,517	113,336
Owner Occupied Housing Units	81.1%	57.3%	57.0%
Renter Occupied Housing Units	15.1%	34.2%	33.6%
Vacant Housing Units	3.7%	8.5%	9.5%
Median Household Income			
2019	\$98,881	\$71,607	\$75,397
2024	\$106,710	\$79,255	\$83,160
Median Home Value			
2019	\$369,831	\$331,524	\$342,986
2024	\$392,400	\$355,123	\$369,719
Average Income Value			
Average Household Income	\$121,237	\$97,615	\$106,928
Per Capita Income			
2019	\$46,185	\$39,866	\$44,473
2024	\$51,369	\$44,631	\$49,672
Median Age			
2019	46.9	40.4	41.4
2019 Population 25+ by Educational Attainment			
Total	10,576	88,212	178,768
Less than 9th Grade	1.0%	3.4%	2.9%
9th - 12th Grade, No Diploma	1.5%	4.0%	4.1%
High School Graduate	13.3%	15.7%	15.2%
GED/Alternative Credential	1.8%	2.3%	2.3%
Some College, No Degree	21.6%	21.8%	21.8%
Associate Degree	11.3%	9.3%	8.3%
Bachelor's Degree	30.6%	28.1%	28.2%
Graduate/Professional Degree	18.9%	15.4%	17.2%

Data Note: Household population includes persons not residing in group quarters. Average Household Size is the household population divided by total households. Persons in families include the householder and persons related to the householder by birth, marriage, or adoption. Per Capita Income represents the income received by all persons aged 15 years and over divided by the total population.

Source: U.S. Census Bureau, Census 2010 Data. Esri forecasts for 2019 and 2024

August 28, 2019